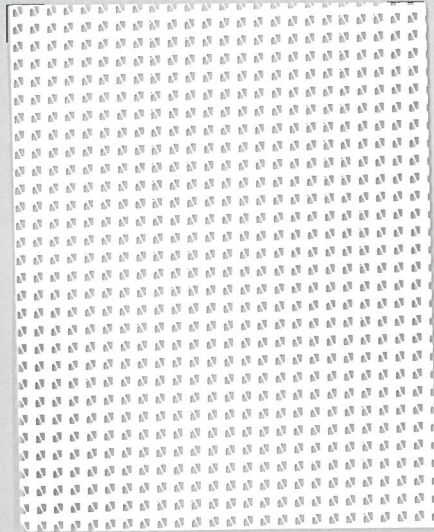


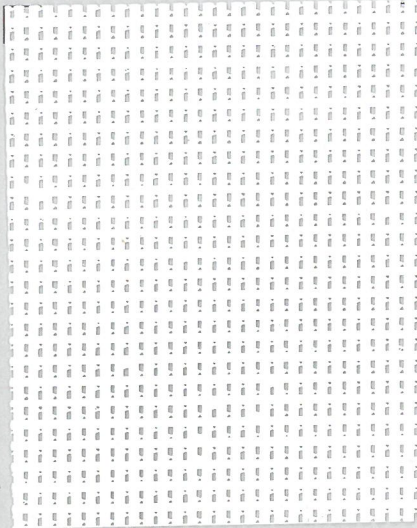
MESH

280



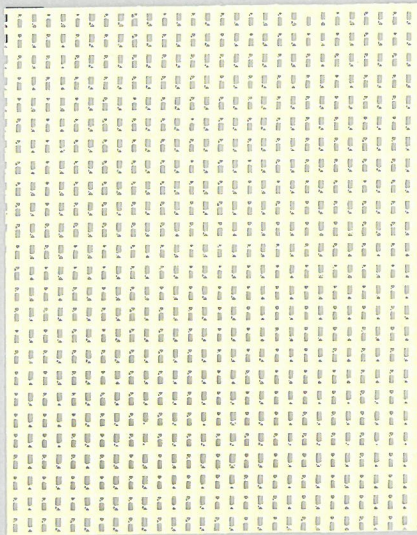
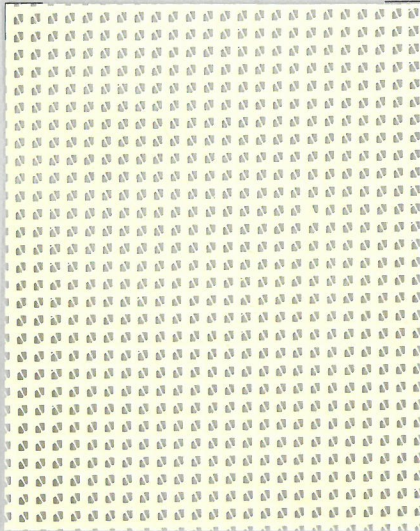
MESH

350



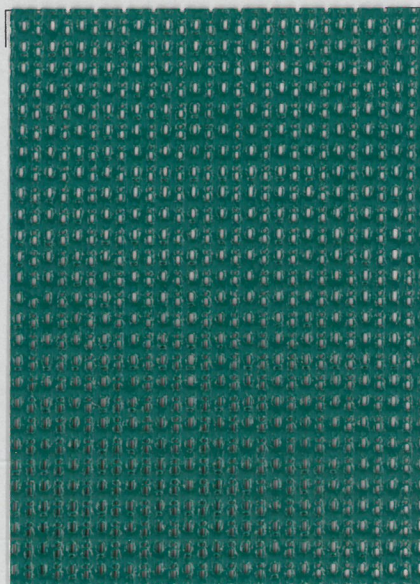
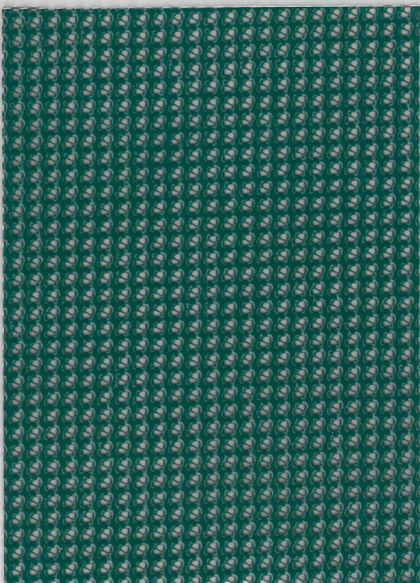
COL.

429



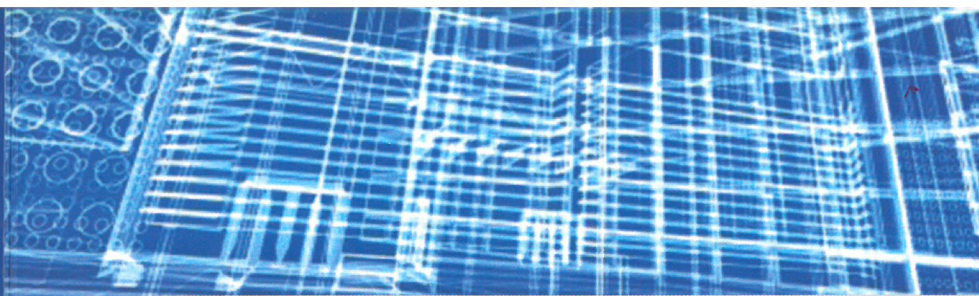
COL.

414



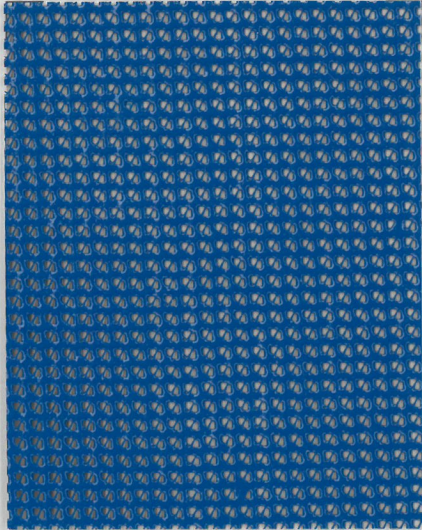
COL.

432

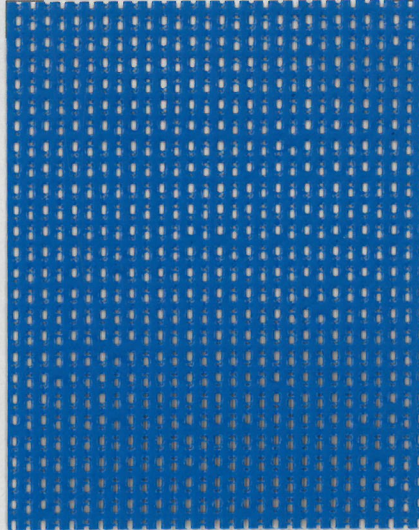


naizil
TESSUTI SPALMATI

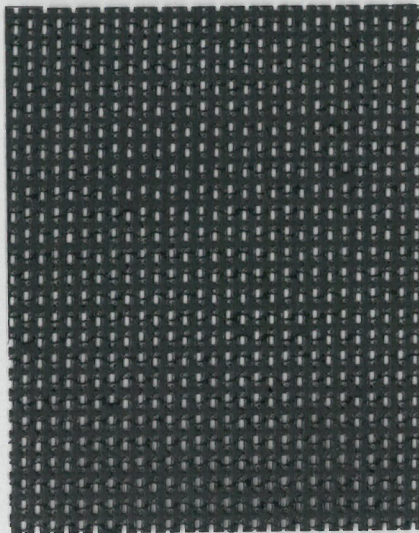
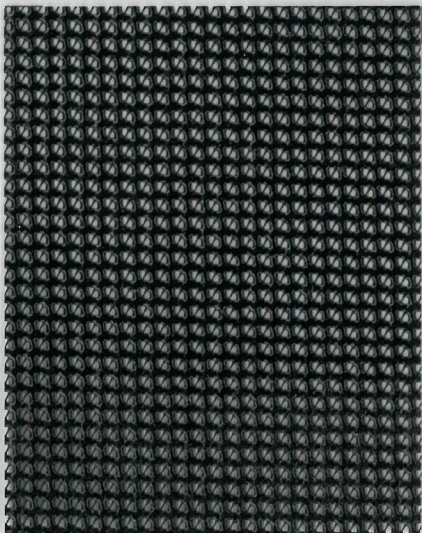
MESH 280



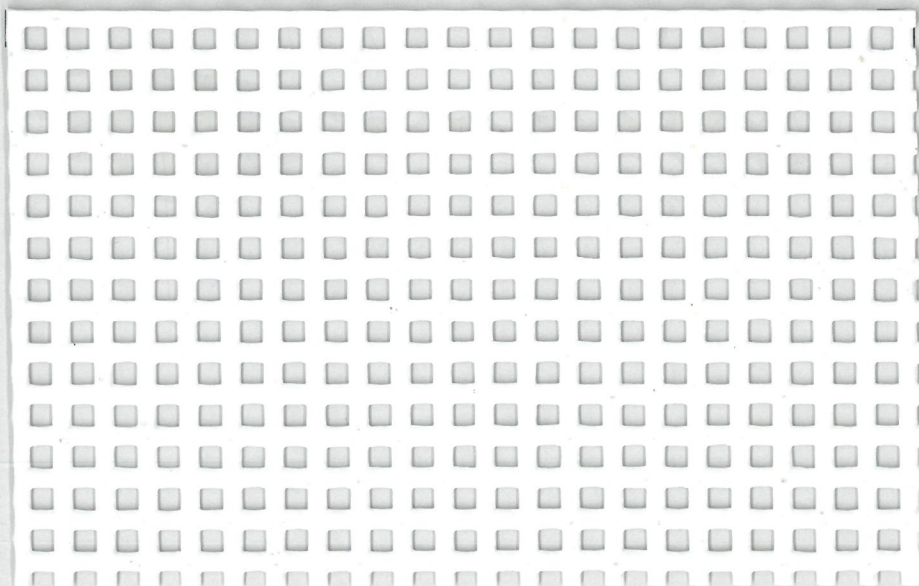
MESH 350



COL. 413



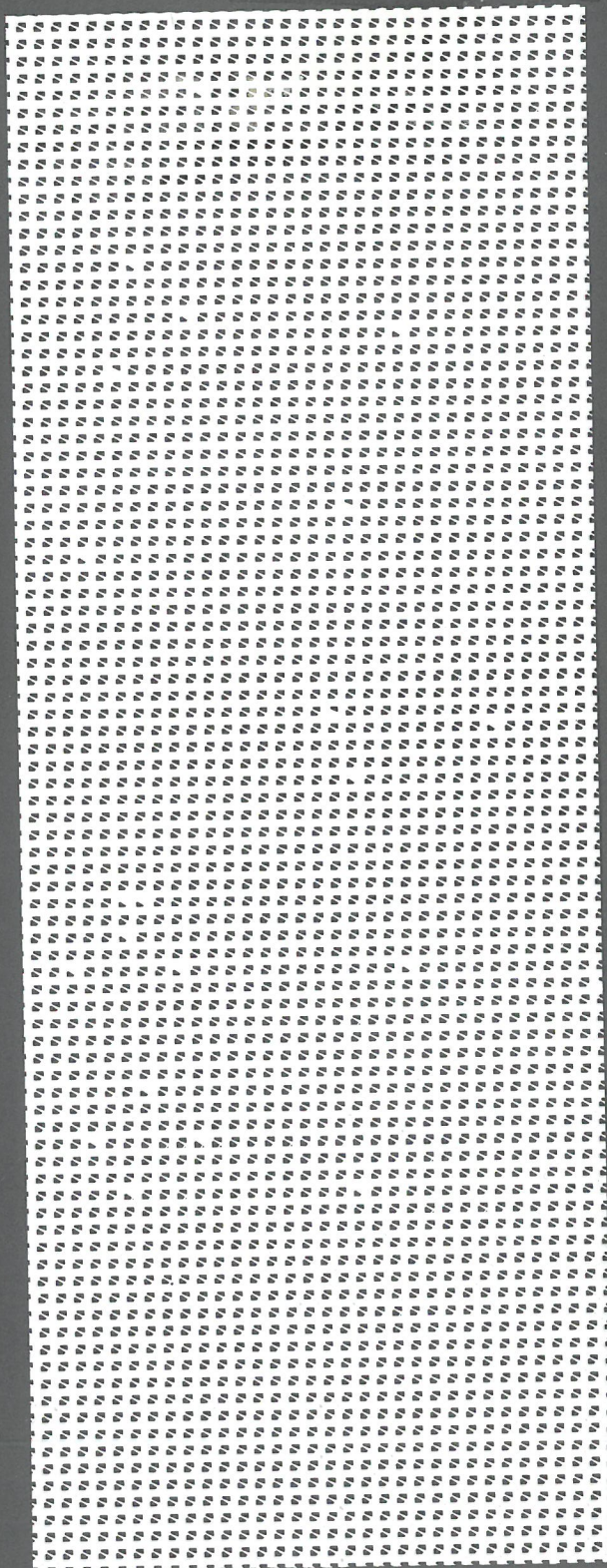
COL. 427



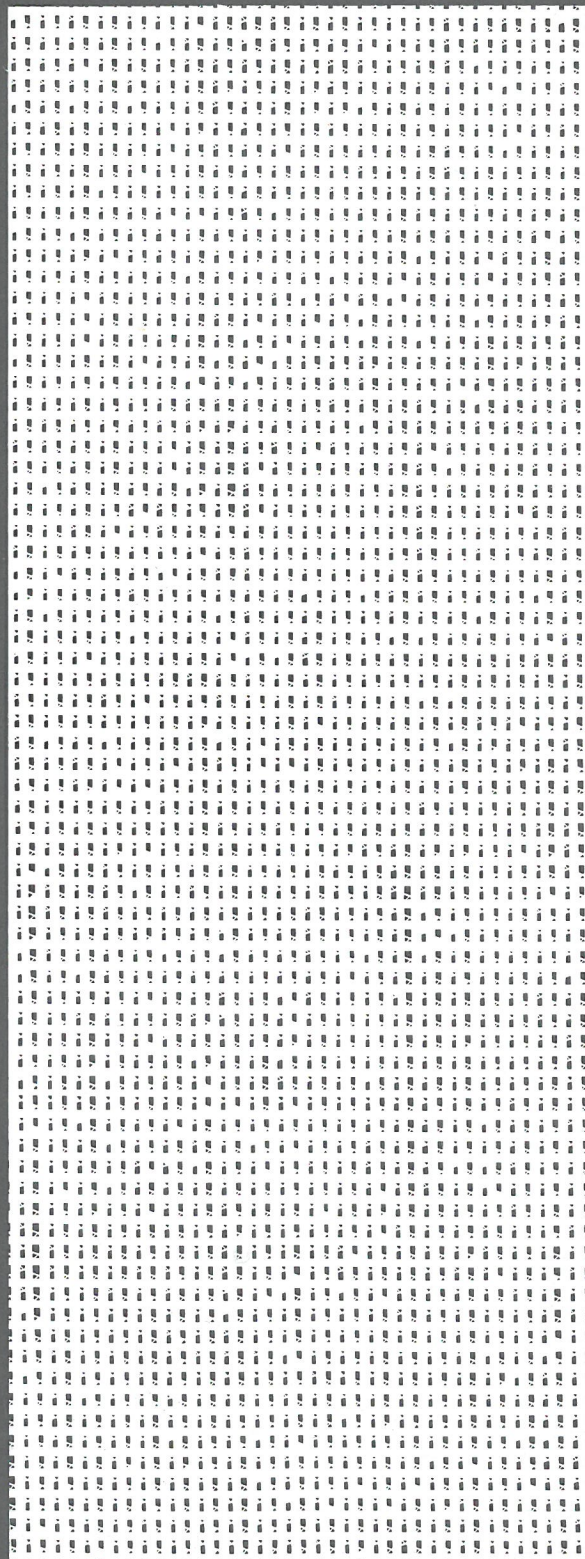
MESH 800
COL. 429

CAMPIONE TESSUTO
FABRIC SAMPLE

MESH	280
COL.	429



MESH	350
COL.	429



CARATTERISTICHE TECNICHE CHARACTERISTICS



	NORME STANDARD	MESH 280		MESH 350		MESH 800	
Tessuto di supporto: Type of base fabric:	EN-ISO2076	Poliestere Alta Tenacità High Tenacity Polyester		Poliestere Alta Tenacità High Tenacity Polyester		Poliestere Alta Tenacità High Tenacity Polyester	
Titolo del filo: Yarn size:	EN-ISO7211	dtex	1100	dtex	1100	dtex	1100 <small>PANAMA 3/0</small>
Fili ordito-trama: Yarn construction warp-weft:	EN-ISO4602	N°/cm	4,3x4,3	N°/cm	3,5x5,5	N°/cm	9x9
Peso totale: Total weight:	EN-ISO2286	g/m ²	280	g/m ²	350	g/m ²	800
Spessore finale: Fabric thickness:	EN-ISO2286	mm	0,42	mm	0,42	mm	1,20
Resistenza alla trazione. Ordito: Tensile strength. Warp:	EN-ISO1421	N/5cm	1500	N/5cm	1300	N/5cm	3000
Resistenza alla trazione. Trama: Tensile strength. Weft:	EN-ISO1421	N/5cm	1500	N/5cm	1800	N/5cm	3000
Resistenza alla lacerazione. Ordito: Tear strength. Warp:	DIN53363	N	300	N	280	N	700
Resistenza alla lacerazione. Trama: Tear strength. Weft:	DIN53363	N	300	N	380	N	700
Resistenza al freddo: Cold resistance:	Prove interne Internal test	°C	-30	°C	-30	°C	-30
Resistenza al caldo: Heat resistance:	Prove interne Internal test	°C	+70	°C	+70	°C	+70
Resistenza alla fiamma: Flame retardancy:	*	Si/Yes*		Si/Yes*		Si/Yes*	
Adesione: Adhesion:	EN-ISO2411	N/2cm	20	N/2cm	20	N/2cm	40
Altezza: Widht:	---	cm	250	cm	320	cm	250
Lunghezza rotolo: Roll length:	---	ml / lm	50	ml / lm	50	ml / lm	50

* Contattateci per i certificati di reazione al fuoco. / Please, contact us for flame retardancy certificates.

Tutte le caratteristiche menzionate sono valori medi con tolleranza del +/-5%; The technical data indicated are average values with allowance +/- 5%.