

Batyline

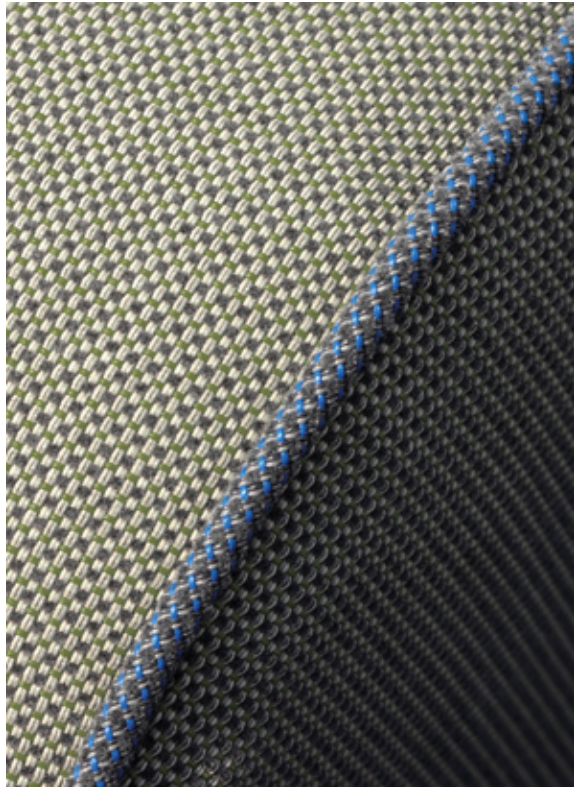
Chill | Outdoor
comfort



Batyline | Chill



Batyline | Chill



Batyline Eden

Smart: a fabric compatible not only with tensioned installation (sling) applications, but also with cushion covering

Textile look: the textured yarn in the weave gives the fabric a soft touch and a textile aspect

Robust: the high-performance Batyline fabric

Batyline Elios

Softness and comfort: the flock yarn in the weave ensures the fabric's softness and comfort

Robust: high-performance Batyline fabric with exceptional abrasion resistance properties (50,000 Martindale test cycles) for cushioning or tensioned installation (sling) applications.

Waterproof versions

Batyline Eden and Batyline Elios feature waterproof versions with the incorporation of a protective film on the back of the fabric; they're ideal for the most demanding outdoor applications.

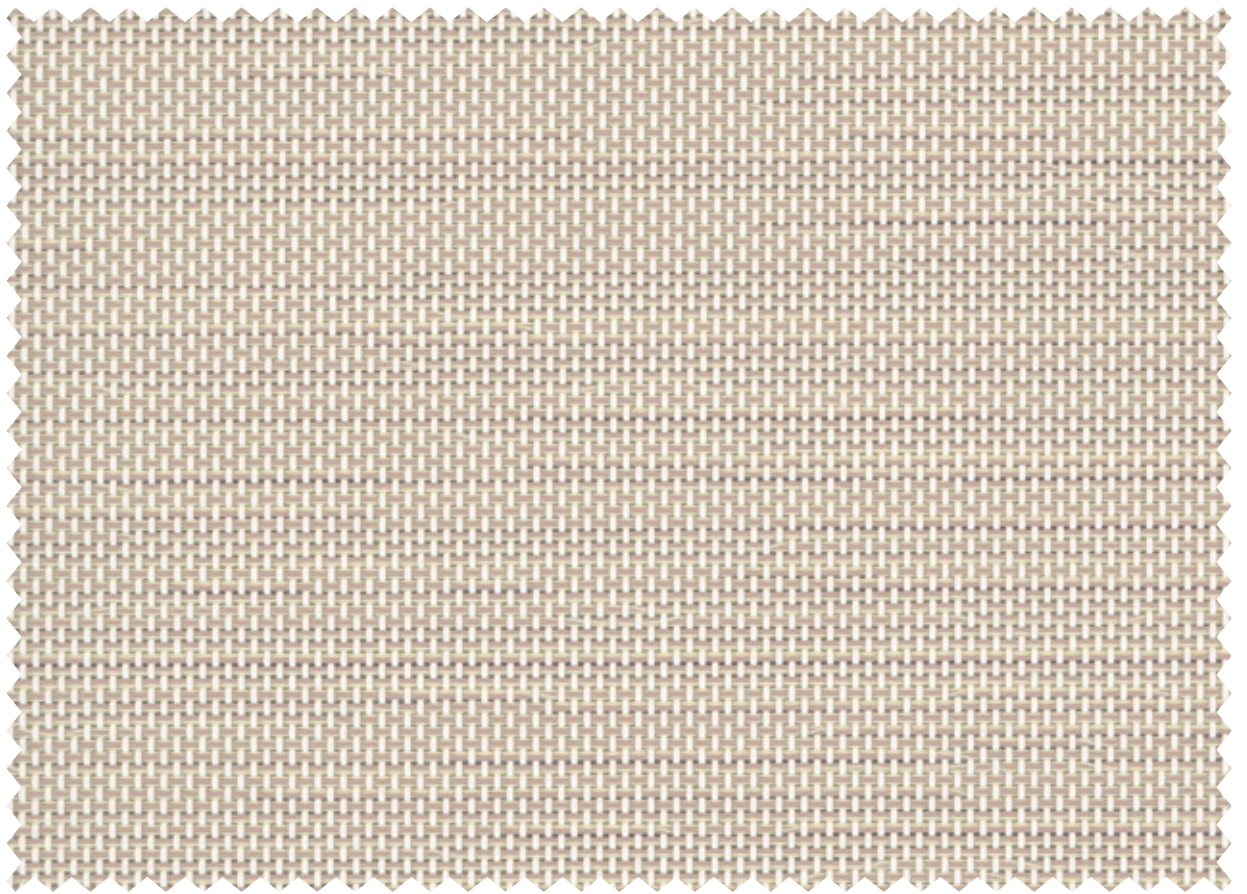
Batyline | Chill

Today's users are ever more in search of warm and relaxing moments in their outdoor spaces. Fabrics in the Batyline Chill range meet this need for sensorial comfort thanks to a soft touch, a textile look and a contemporary design. The fabrics' high level of technical performance guarantees the furniture's durability.



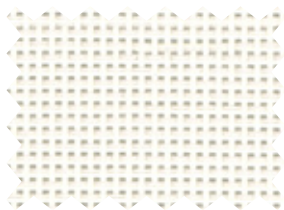
Batyline Eden

Eden



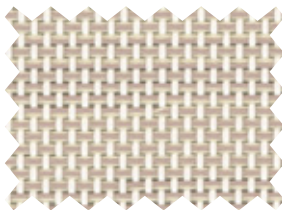
Clay

7710-51030



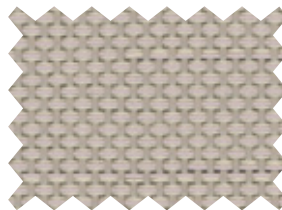
Iceberg

7710-50718



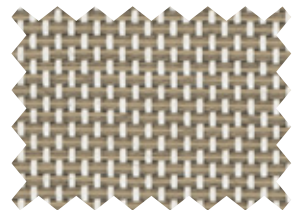
Clay

7710-51030



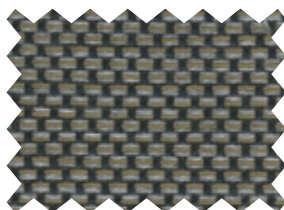
Eglantine

7710-50969



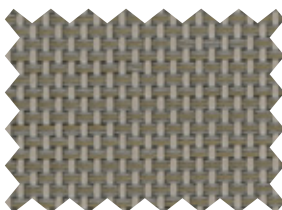
Porcelain

7710-50719



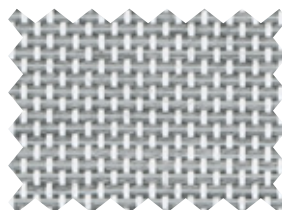
Frozen brown

7710-50554



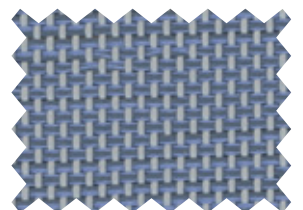
Nutmeg

7710-50563



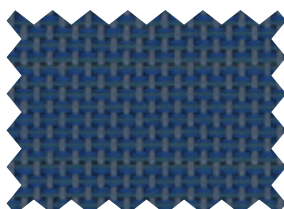
Light grey

7710-50567



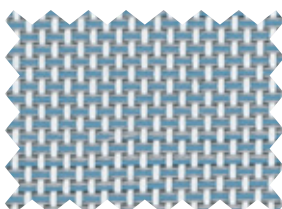
Ice cube

7710-50965



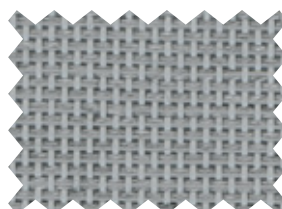
Meridian

7710-50973



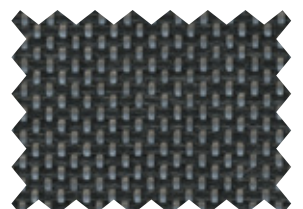
Ceramic Blue

7710-51032



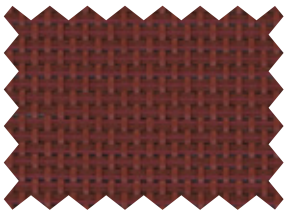
Pebble

7710-50566



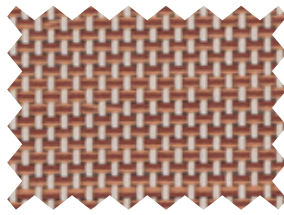
Steel

7710-50720



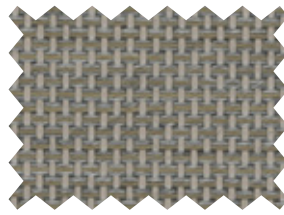
Berry

7710-50972



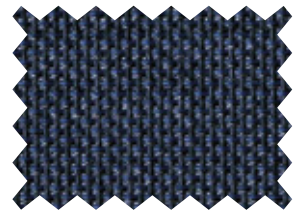
Ocre

7710-51031



Beige grey

7710-50561



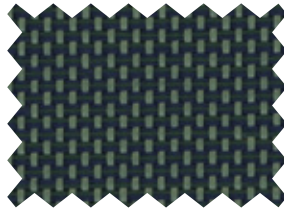
Grey blue

7710-50553



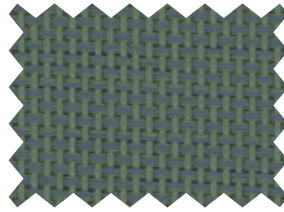
Midnight

7710-50557



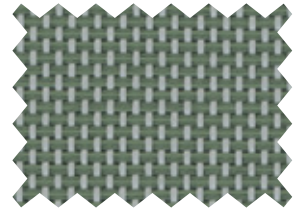
Crocodile

7710-50971



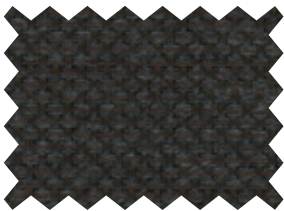
Almond tree

7710-50970



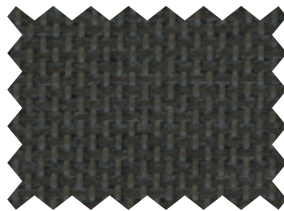
Stem

7710-50967



Dark Chocolate

7710-50740



Dark brown

7710-50560

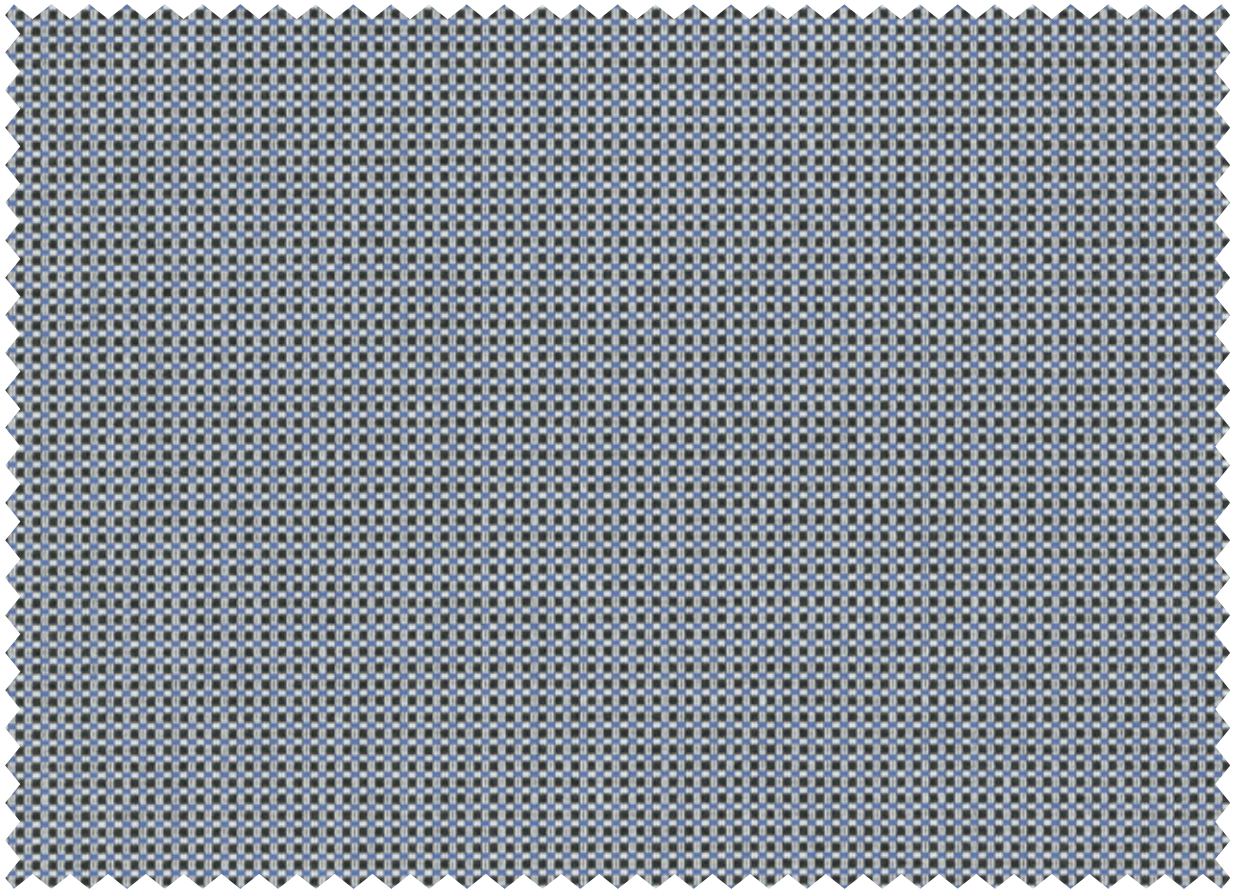


Shadow

7710-50555

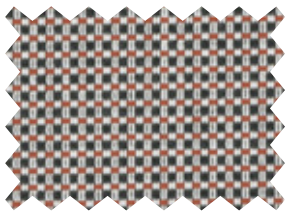
Batyline Elios

Elios



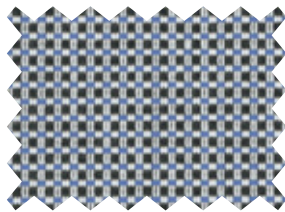
Spring

7740-51037



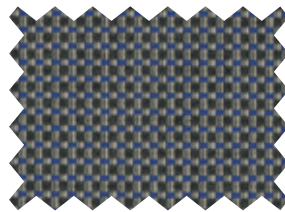
Ladybird

7740-51036



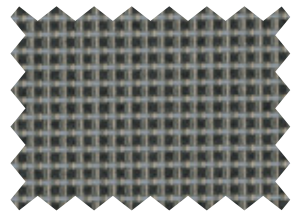
Spring

7740-51037



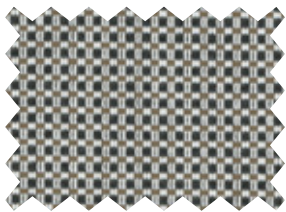
Blue Jay

7740-51038



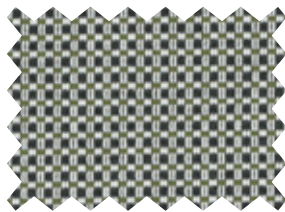
Basalt

7740-51034



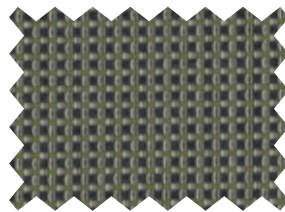
Caramel

7740-51035



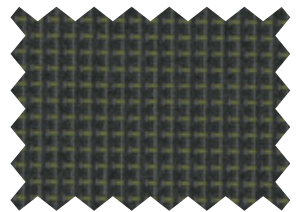
Birch

7740-51042



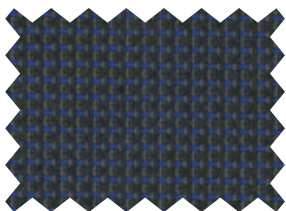
Sparrow

7740-51041



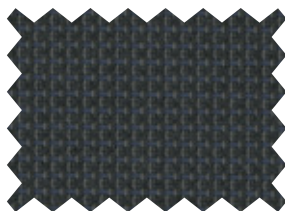
Evergreen

7740-51040



Sodalite

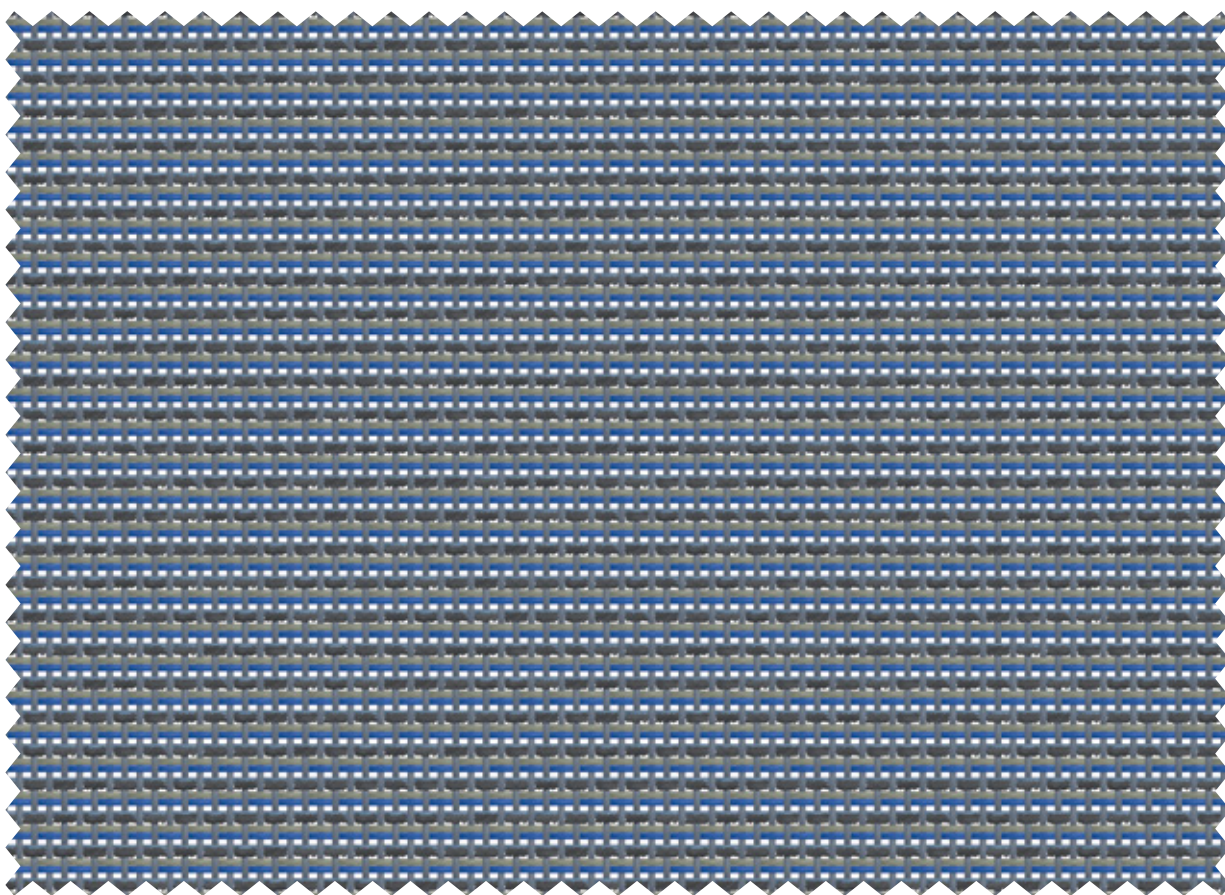
7740-51039



Dark night

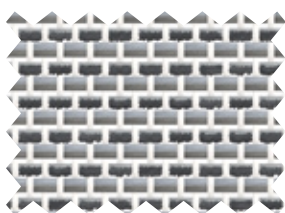
7740-51033

Elios Sling



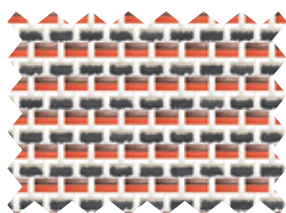
Azurite

7747-52086



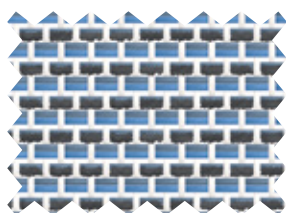
Pyrite

7747-52090



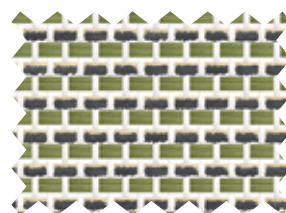
Jasper

7747-52081



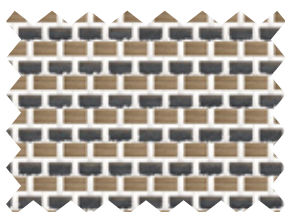
Cobalt

7747-52083



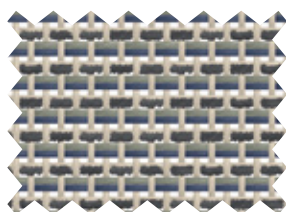
Epidote

7747-52084



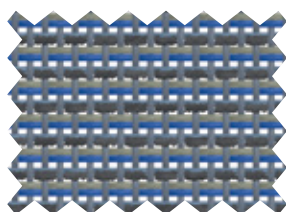
Smokey quartz

7747-52082



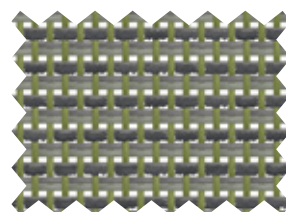
Satellite

7747-52085



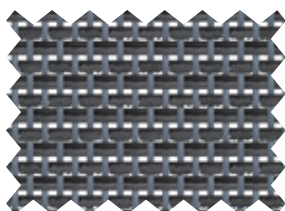
Azurite

7747-52086



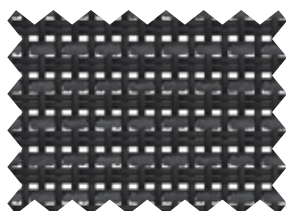
Serpentine

7747-52087



Galaxite

7747-52088



Onyx

7747-52089

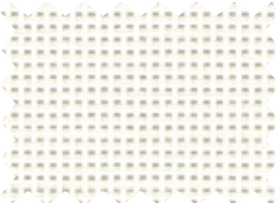
Batyline Waterproof

Eden Waterproof

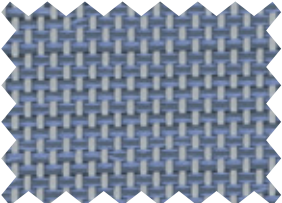


Shadow

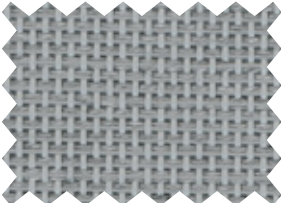
7711WP-50555



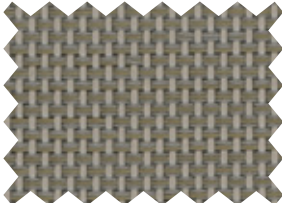
Iceberg 7711WP-50718



Ice cube 7711WP-50965



Pebble 7711WP-50566

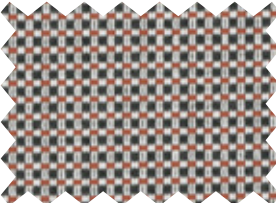


Nutmeg 7711WP-50563

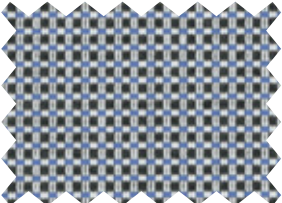


Shadow 7711WP-50555

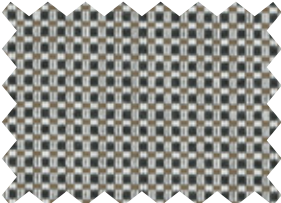
Elios Waterproof



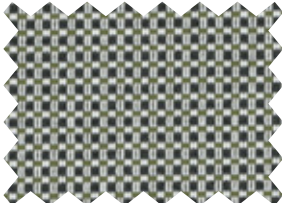
Ladybird 7741WP-51036



Spring 7741WP-51037



Caramel 7741WP-51035



Birch 7741WP-51042



Dark night 7741WP-51033

Batyline | Chill

	Batyline Elios 7740	Batyline Elios Waterproof 7741WP	Batyline Elios Sling 7747	Batyline Eden 7710	Batyline Eden Waterproof 7711WP	
	■ Technical properties					Standards
Weight	450 g/m ² 13.3 oz/sqyd	540 g/m ² 15.9 oz/sqyd	510 g/m ² 15 oz/sqyd	460 g/m ² 13.3 oz/sqyd	560 g/m ² 16.5 oz/sqyd	EN ISO 2286-2
Width	140 cm • 55.1 in.	140 cm • 55.1 in.	180 cm • 70.9 in.	180 cm • 70.9 in.	180 cm • 70.9 in.	
Openess factor	/	/	17%	8%	/	EN 410
	■ Physical properties					
Tensile strength (warp/weft)	160/100 daN/5 cm	160/100 daN/5 cm	240/250 daN/5 cm	240/150 daN/5 cm	240/150 daN/5 cm	EN ISO 1421
Tear strength (warp/weft)	22/15 daN	22/15 daN	35/40 daN	40/30 daN	40/30 daN	DIN 53.363
Elongation under load 20 daN (warp/weft)	/	/	≤ 2.5% / ≤ 2.5%	≤ 2.5% / ≤ 4%	≤ 2.5% / ≤ 4%	EN ISO 1421
Abrasion resistance	>50,000 cycles >600,000 double rubs - Heavy Duty	>50,000 cycles >600,000 double rubs - Heavy Duty	>50,000 cycles >600,000 double rubs - Heavy Duty	50,000 cycles 400,000 double rubs - Heavy Duty	50,000 cycles 400,000 double rubs - Heavy Duty	EN ISO 12947-2 Martindale ASTM D4157 Wyzenbeek
Mould resistance	Method A, Excellent					EN ISO 846-A
Extreme working temperatures	-10°C / +70°C -14°F / +158°F	-10°C / +70°C -14°F / +158°F	-10°C / +70°C -14°F / +158°F	-30°C / +70°C -22°F / +158°F	-30°C / +70°C -22°F / +158°F	
Pilling test				4	4	EN ISO 12945-2
Light fastness	8/8 for 1,000 h					NF EN ISO 105-B02
Weather resistance	7/8 for 1,000 h GS = 4 for 700 h					NF EN ISO 105-B04 ASTM G154
	■ Flame retardancy					
Rating	Pass	/	Pass	/	/	IMO MSC.307(88) (2010FTP Code) Annex 1 Part 8
	No ignition					EN 10211&2
	Class 1					NFPA 260
	Pass					Cal TB117
	■ Management systems					
Quality						ISO 9001
Environment						ISO 14001
Energy						ISO 50001
	■ Certifications, labels, warranty					
			 * For 7740 & 7710FR	 STANDARD 100 CO 693/14 IFTH www.oeko-tex.com	5-year warranty	 ¹

¹ Logo "+0": summarises the Serge Ferrari Group's commitment to CSR, to align economic performance and positive impact. Find out about our concrete actions in our CSR report.

A customisation service is available under certain conditions, please contact your local sales representative for more information. Quoted technical characteristics are average values with a +/- 5% tolerance. Our products are subject to improvements resulting from technical developments and we reserve the right to modify their characteristics at any time. The purchaser of our products is responsible for checking the above data. A maintenance and spot cleaning guide is available on request.