

# Batyline

Perform | The high performance fabric



# Batyline | Perform



# Batyline | Perform



## Batyline Iso

**Smart:** a weave that ensures optimised placement and cutting in any direction in warp or weft

**Classic:** a degree of transparency appreciated for lightweight, enduring design

**Robust:** the high-performance Batyline fabric



## Batyline Duo

**Elegant:** deep colours thanks to a multi-colored yarn weave

**Sophisticated:** random weave giving a natural aspect with the Twist version

**Robust:** the high-performance Batyline fabric



## Batyline Lounge

**Enduring:** the elegance of a simple, classic design

**Practical:** very easy upkeep, specially created for covering furniture seats and backrests for the contract market

**Robust :** the high-performance Batyline fabric

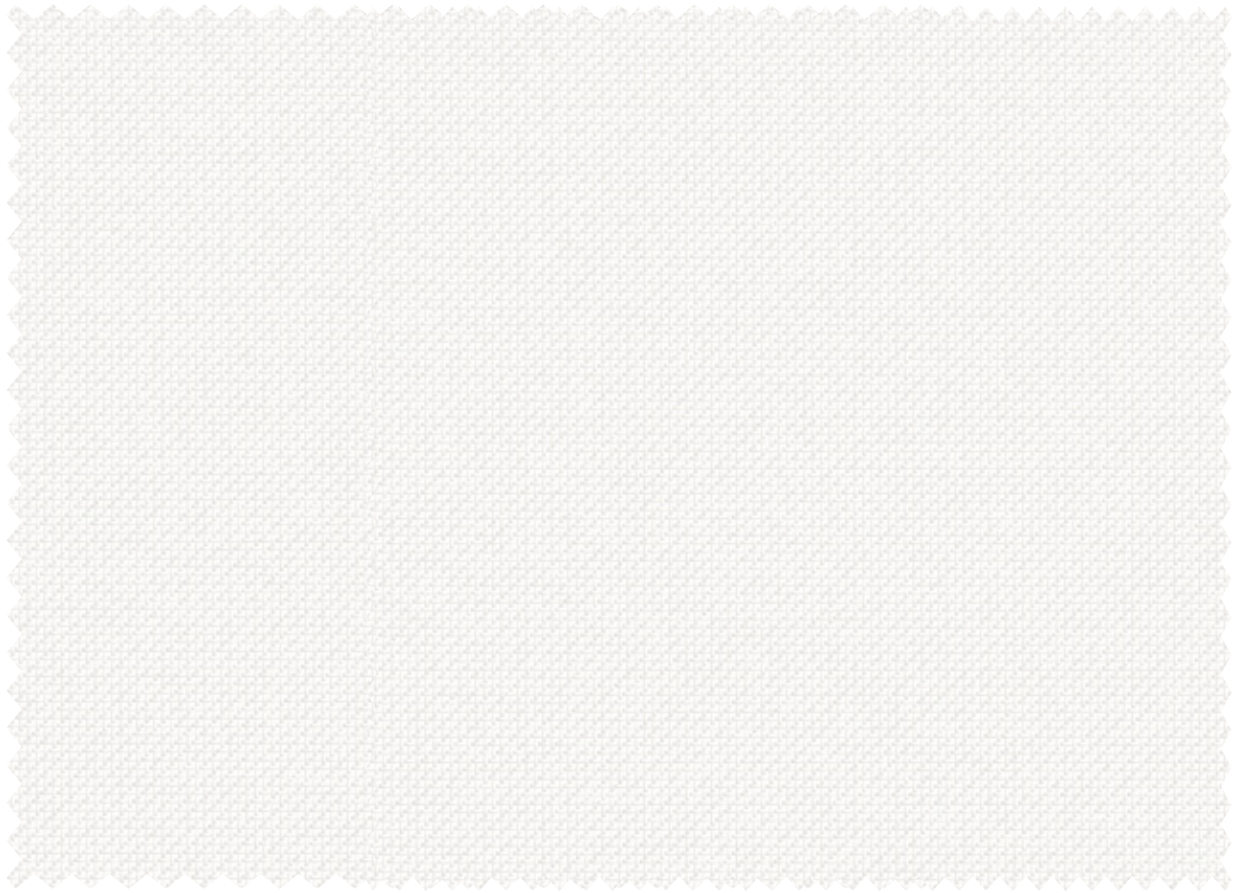
# Batyline | Perform

The Perform range features the brand's high-performance fabrics for outdoor furniture. These fabrics possess all the unique characteristics that have forged Batyline's reputation: strength performance, resistance to demanding climatic conditions (UV, moulds, bad weather) and excellent durability.



# Batylne Iso and Panama

Iso



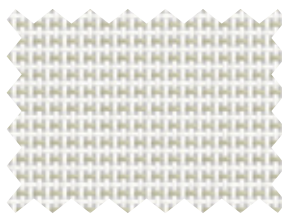
**Snow**

7407-5001



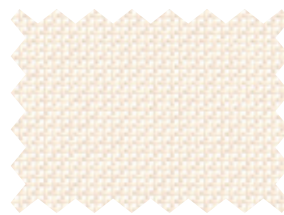
**Snow**

7407-5001



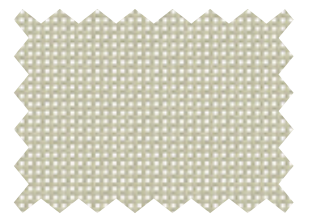
**Raffia**

7407-50883



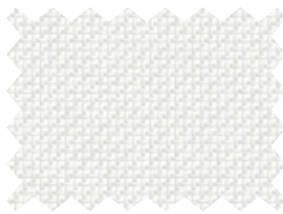
**Sand**

7407-5029



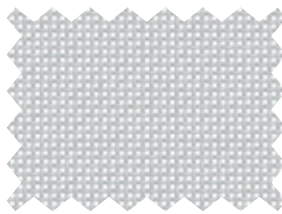
**Almond**

7407-50880



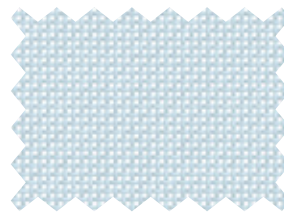
**Chalk**

7407-51054



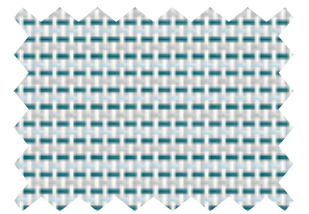
**Platinum Grey**

7407-5374



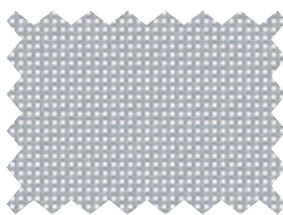
**Cloud**

7407-50881



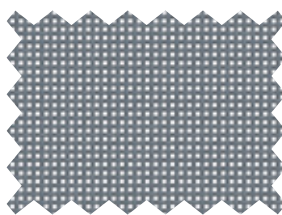
**Mist**

7407-50884



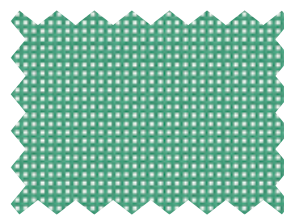
**Steel**

7407-5003



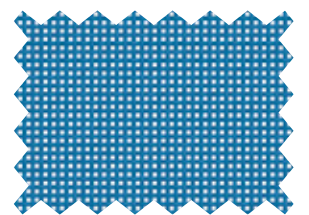
**Slate**

7407-5004



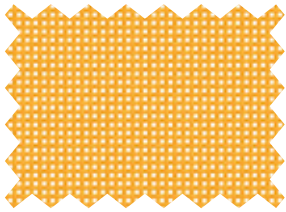
**Botanica**

7407-51057

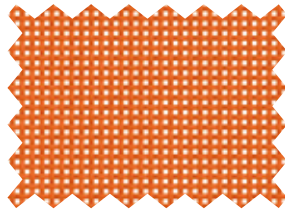


**Electric Bloom**

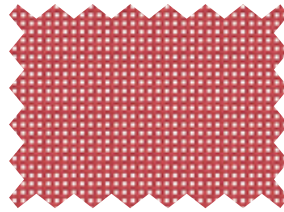
7407-51056



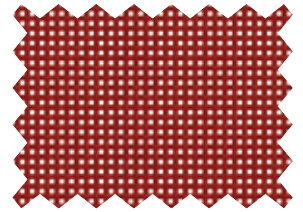
**Buttercup** 7407-5017



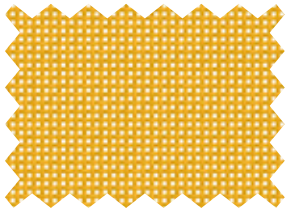
**Carrot** 7407-5166



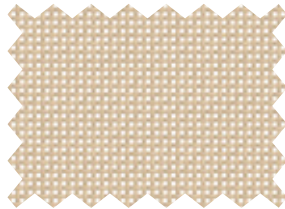
**Cherry** 7407-5011



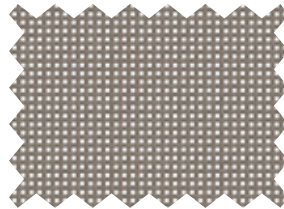
**Poppy** 7407-5350



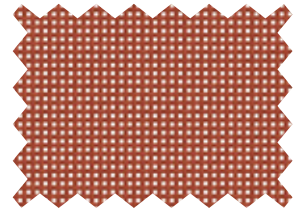
**Solar** 7407-50886



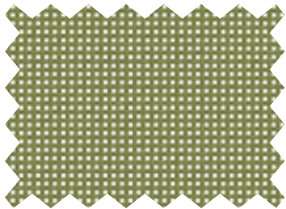
**Linen** 7407-5378



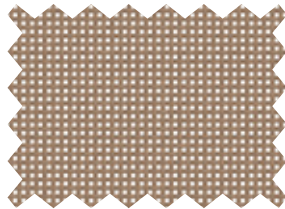
**Chestnut** 7407-50070



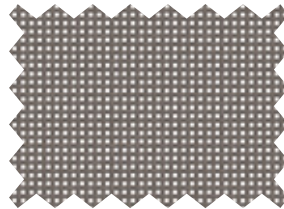
**Tomette** 7407-50866



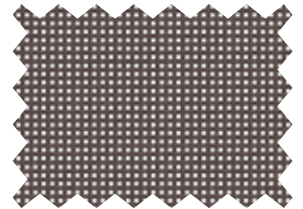
**Yucca** 7407-50885



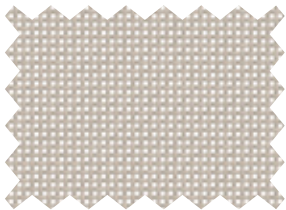
**Hazelnut** 7407-50882



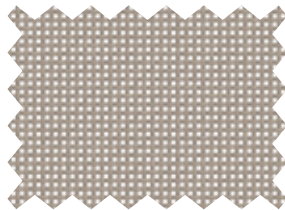
**Coffee** 7407-5015



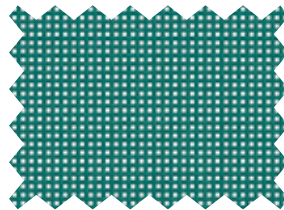
**Chocolate** 7407-5048



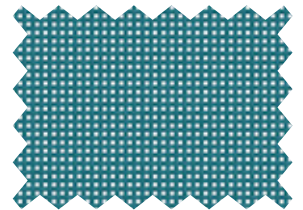
**Incence** 7407-5376



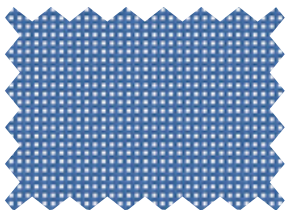
**Ash** 7407-5014



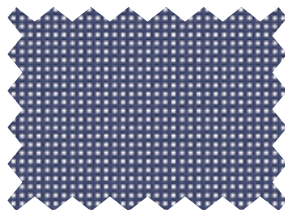
**Emerald** 7407-51055



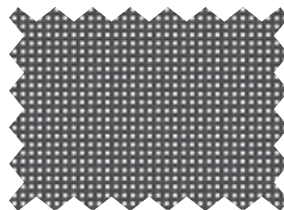
**Peacock** 7407-50865



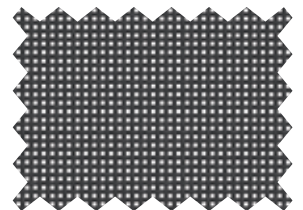
**Corn Flower** 7407-5007



**Night** 7407-5006

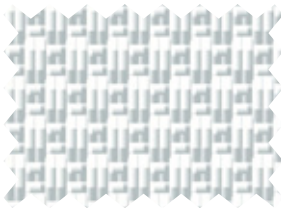


**Anthracite grey** 7407-5700

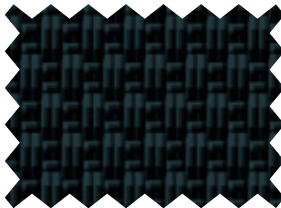


**Ebony** 7407-5005

# Panama



**Snow**      TSR1-5001

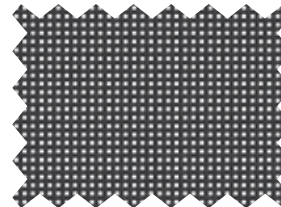


**Ebony**      TSR1-5005

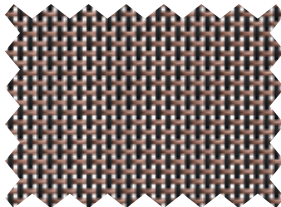
# Iso FR



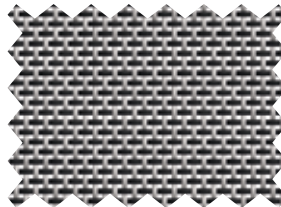
**Snow**      7407FR-5001



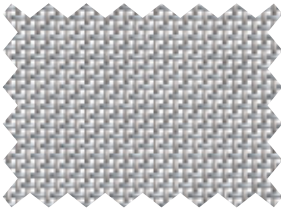
**Ebony**      7407FR-5005



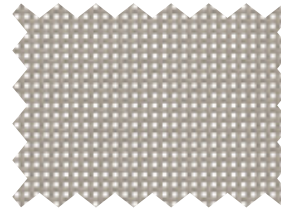
**Black/Copper**      7407FR-5266



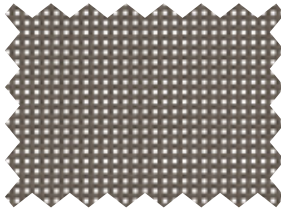
**Iron**      7407FR-5261



**Aluminum**      7407FR-5260



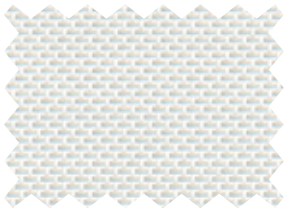
**Ash**      7407FR-5014



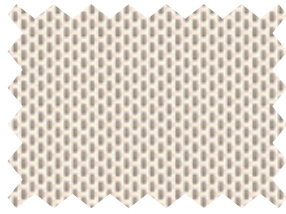
**Coffee**      7407FR-5015

# Batyline Duo

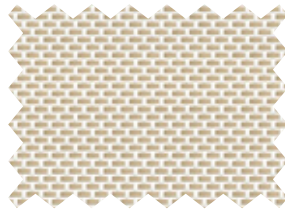
## Duo



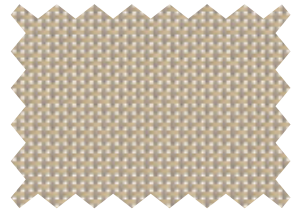
**Pearl** 7300-50879



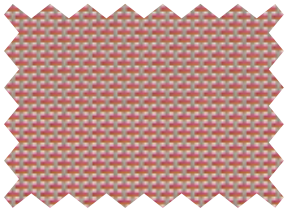
**Light beige** 7300-5393



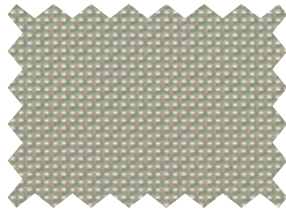
**Raffia** 7300-5392



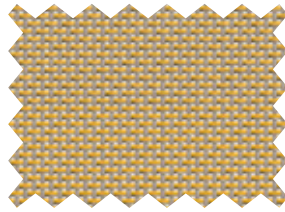
**Brown sugar** 7300-5394



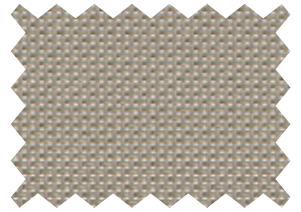
**Siena** 7300-50874



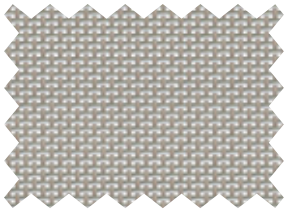
**Avocado** 7300-50867



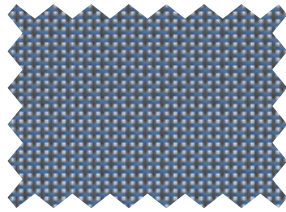
**Ginger** 7300-50871



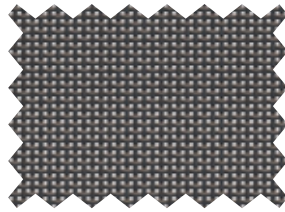
**Leather** 7300-50872



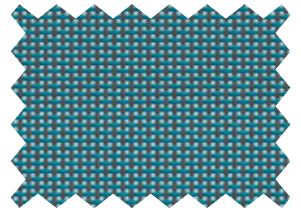
**Concrete grey** 7300-50868



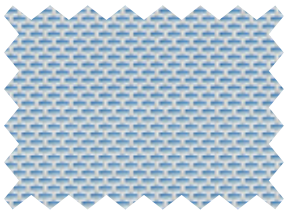
**Cruise** 7300-50869



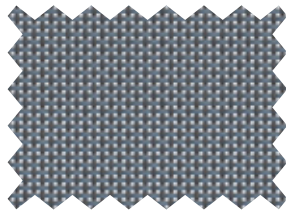
**Onyx** 7300-5384



**Duck** 7300-50870



**Sky** 7300-51061

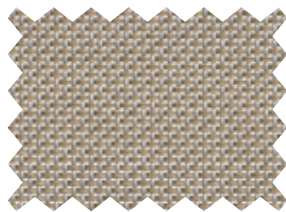


**Storm** 7300-50890

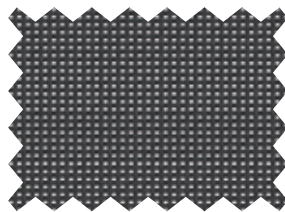
## Duo FR



**Snow** 7300FR-5001



**Ramie** 7300FR-5557



**Ebony** 7300FR-5005



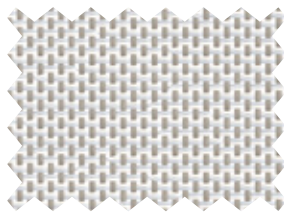
## Duo Twist



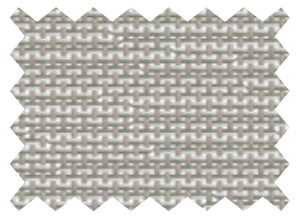
**Silica** 7301-50877



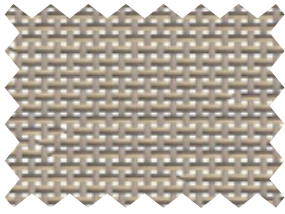
**Mist** 7301-5396



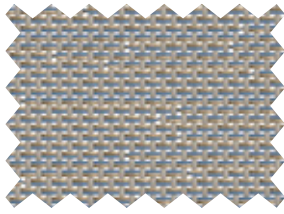
**Cloud** 7301-5397



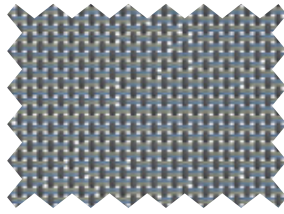
**Mineral** 7301-50876



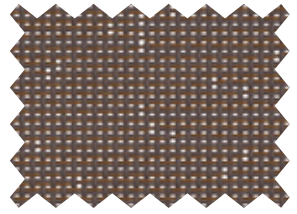
**Cappuccino** 7301-5398



**Moonstone** 7301-50875



**Mica** 7301-50878



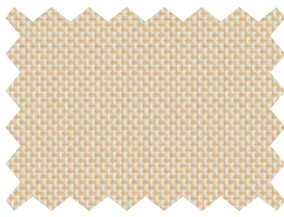
**Espresso** 7301-5402

## Batyline Lounge

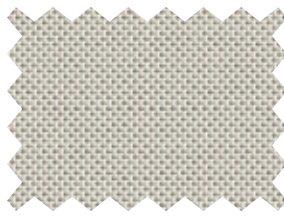
### Lounge



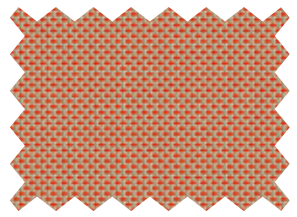
**White** 7720FR-5701\*



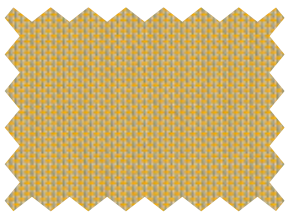
**Shea** 7720FR-50931\*



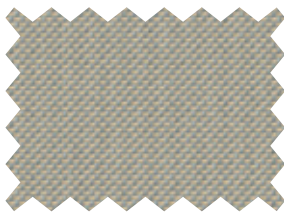
**Quartz** 7720FR-50932\*



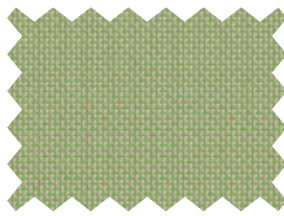
**Cheyenne** 7720FR-50928



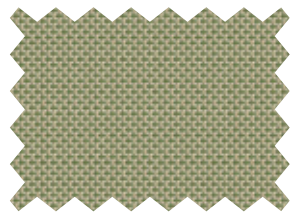
**Safran** 7720FR-50929



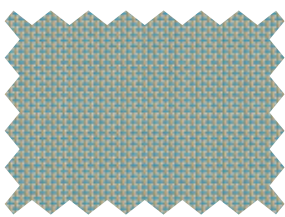
**Zinc** 7720FR-5703



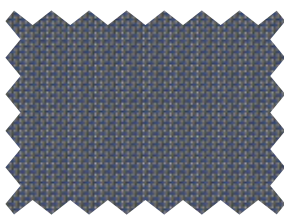
**Sage** 7720FR-5049



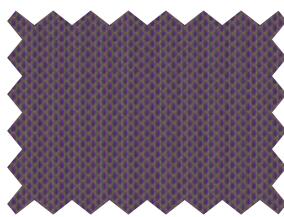
**Reed** 7720FR-50930



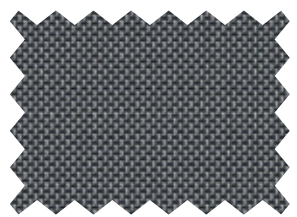
**Sea spray** 7720FR-50934



**Abyss** 7720FR-50935










**Purple** 7720FR-5708



**Dark aluminum** 7720FR-5706\*

\*these colours are also available in 7721WP Waterproof version

# Batyline | Perform

	Batyline Iso 7407	Batyline Iso FR 7407FR	Batyline Panama TSR1	Batyline Duo 7300	Batyline Duo FR 7300FR	Batyline Twist 7301	Batyline Lounge 7720FR	Batyline Lounge 7721WP	
<b>■ Technical properties</b>									<b>Standards</b>
Weight	500 g/m <sup>2</sup> 14.7 oz/sqyd	500 g/m <sup>2</sup> 14.7 oz/sqyd	850 g/m <sup>2</sup> 25.1 oz/sqyd	560 g/m <sup>2</sup> 16.5 oz/sqyd	560 g/m <sup>2</sup> 16.5 oz/sqyd	560 g/m <sup>2</sup> 16.5 oz/sqyd	500 g/m <sup>2</sup> 14.7 oz/sqyd	500 g/m <sup>2</sup> 17.4 oz/sqyd	EN ISO 2286-2
Width	180 cm - 70.9 in.						140 cm - 55.1 in.		
Openess factor	22%	22%	11%	8%	8%	8%	/	/	
<b>■ Physical properties</b>									
Tensile strength (warp/weft)	240/240 daN/5 cm	240/240 daN/5 cm	420/340 daN/5 cm	240/210 daN/5 cm	240/210 daN/5 cm	240/210 daN/5 cm	150/150 daN/5 cm	150/150 daN/5 cm	EN ISO 1421
Tear strength (warp/weft)	/						18/15 daN		DIN 53.363
Elongation under load 20 daN (warp/weft)	≤2.5% / ≤2.5%			≤2% / ≤3%			/		EN ISO 1421
Abrasion resistance	>600,000 double rubs - Heavy Duty >120 000 cycles								ASTM D4157 Wyzenbeek EN ISO 12947-2 Martindale
Color fastness	GS=4 at 700h / >1,500 QUV								ASTM G154: UVA340
Mould resistance	Methods A, Excellent								EN ISO 846-A
Extreme working temperatures	-30°C / +70°C • -22°F / +158°F								
Light fastness	8/8 for 1,000 h								NF EN ISO 105-B02
Weather resistance	8/8 for 1,000 h								NF EN ISO 105-B04
	GS = 4 for 700 h								ASTM G154
<b>■ Flame retardancy</b>									
Rating	/	M2	/	/	M2	/	M2	/	NFP 92-507
	/	B1	/	/	B1	/	B1	/	DIN 4102-1
	/	Pass	/	/	Pass	/	Pass	/	IMO MSC.307(88) (2010FTP Code) Annex 1 Part 8
	/	Pass	/	/	Pass	/	Pass	/	CAL TB 117
	/	/	/	/	/	/	Pass	/	BS5852 Source 2
Euroclass	/	B-s2, d0	/	/	B-s2, d0	/	/	/	EN 13501-1
<b>■ Management systems</b>									
Quality									ISO 9001
Environment									ISO 14001
Energy									ISO 50001
<b>■ Certifications, labels, warranty</b>									
   <p>* For 7407FR, 7300FR, 7720FR, 7721FR</p>   <p>STANDARD 100 CQ 693/14 IFTH www.oeko-tex.com</p>  									

<sup>1</sup> Logo "+=0": summarises the Serge Ferrari Group's commitment to CSR, to align economic performance and positive impact. Find out about our concrete actions in our CSR report.

A customisation service is available under certain conditions, please contact your local sales representative for more information. Quoted technical characteristics are average values with a +/- 5% tolerance. Our products are subject to improvements resulting from technical developments and we reserve the right to modify their characteristics at any time. The purchaser of our products is responsible for checking the above data. A maintenance and spot cleaning guide is available on request.