

Interior Solar Protection

The perfect match

naturally

Transparency

3 OPENNESS FACTORS

for optimum comfort

Weaving

NATURAL

woven look

Design

OVER 100 VARIATIONS

for imagining everything

Soltis

Touch

Naturally

Filter the light with perfect clarity

5% 3% 1%

Soltis Touch is available in
3 openness factors to adapt to every
need and configuration.

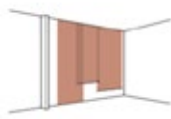
MAIN APPLICATIONS



Interior
blinds



Vertical
blinds



Panel
tracks

OPTIMUM

COMFORT

**Give your interiors
a touch of natural elegance.**

Soltis Touch combines aesthetic qualities
with high levels of thermal, acoustic and light
protection performance.



5%

Transparency maintained to take
full advantage of the exterior view
and natural light.



A touch of singularity ousting uniformity and neutrality.

A uniquely natural effect created by an exclusive weave combining different materials and colours.

Soltis Touch plays with light, creating chromatic effects and interplay of transparencies designed to give character to your interiors.

Solar protection becomes an essential part of your interior design.



3%

The ideal combination of aesthetics, thermal, visual and acoustic comfort.



A UNIQUE WEAVE FOR A 100% NATURAL LOOK

1%

The ideal solution for controlling glare and enhancing acoustic comfort.

SUPERIOR PERFORMANCES FOR RELAXING INTERIORS



Thermal performance

Soltis Touch excludes up to 91% of incoming heat to maintain a stable interior temperature in summer without increasing air conditioning requirements. This enhances user comfort and building energy performance.



Visual comfort

Soltis Touch maintains outward views and uninterrupted natural light while protecting from glare.



Acoustic performance

Soltis Touch reduces reverberation, thereby improving the occupants' acoustic comfort. The fabric absorbs up to 45% of the noise within a 100 mm air gap.



Fire safety

Soltis Touch meets international standards for fire rating standards and does not contribute to flashover.



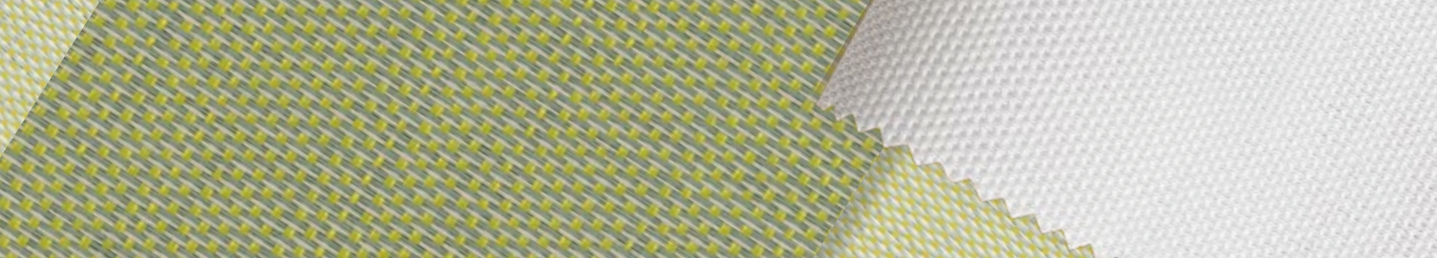
Health safety

Soltis Touch fabric is guaranteed totally phthalate-free. It is certified Greenguard Gold, proving the fabric complies with the most stringent indoor air quality standards. It therefore contributes to creating a healthier interior.

7651-50948

7653-50948

7655-50948



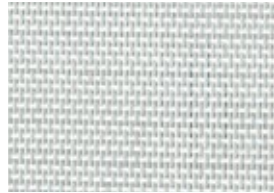
OVER 100 VARIATIONS AVAILABLE TO EMBODY YOUR INTERIOR DESIGN

Jasmine 7653-50982



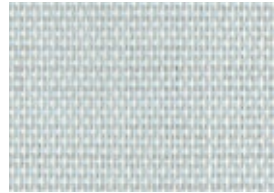
☀️ 5% 3% 1%

Carrara 7653-50937



☀️ 5% 3% 1%

Mother of Pearl 7653-50953



☀️ 3%

Flint 7653-50946



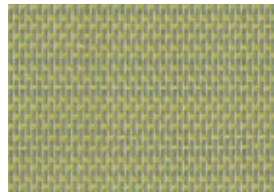
☀️ 5% 3%

Wheat 7653-50941



☀️ 5% 3%

Citrine 7653-50962



☀️ 3%

Turmeric 7653-50942



☀️ 5% 3%

Biscuit 7653-50960



☀️ 5% 3%

Rope 7653-50957



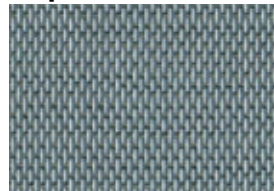
☀️ 5% 3%

Celestial 7653-50938



☀️ 5% 3%

Elephant 7653-50943



☀️ 5% 3%

Opaline 7653-50947



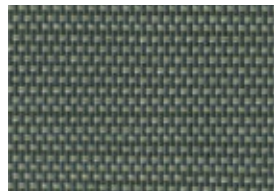
☀️ 5% 3%

Coffee bean 7653-50939



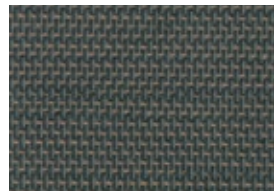
☀️ 5% 3%

Tannin 7653-50948



☀️ 5% 3% 1%

Mocha 7653-50958



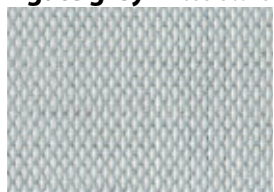
☀️ 5% 3%

Mahogany 7653-50951



☀️ 5% 3%

Agate grey 7653-50945



☀️ 5% 3% 1%

Maple 7653-50952



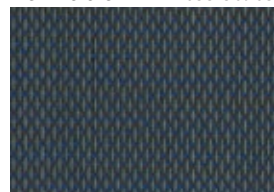
☀️ 3%

Shore 7653-50949



☀️ 5% 3%

Tornado 7653-50963



☀️ 5% 3%

SOLAR AND LIGHT

(according to EN 14501)

Glacier 7653-50955



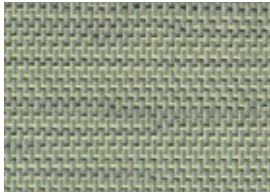
5% 3%

Raffia 7653-50959



5% 3% 1%

Reed 7653-50964



3%

Flower bud 7653-50954



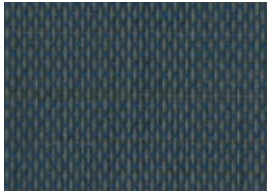
3%

Pacific 7653-50961



3%

Twilight 7653-50950



3%

Cobalt 7653-50944



5% 3%

Charcoal 7653-50940



5% 3% 1%

SOLTIS TOUCH 5% (7655)

Colours and references		Roll widths		TS	RS	AS	TVn-h	g _{int} ISO 52022-3' Glazing D**
		180 cm 70.9 in	270 cm 106.3 in					
Carrara	50937	•	•	11	54	35	9	0.15
Celestial	50938	•	•	7	28	65	7	0.23
Coffee bean	50939	•	•	7	14	79	7	0.27
Charcoal	50940	•	•	6	9	85	6	0.28
Wheat	50941	•	•	10	48	42	8	0.18
Turmeric	50942	•	•	9	31	60	8	0.23
Elephant	50943	•	•	7	23	70	7	0.24
Cobalt	50944	•	•	6	11	83	6	0.28
Agate grey	50945	•	•	9	45	46	8	0.18
Flint	50946	•	•	9	46	45	8	0.18
Opaline	50947		•	9	32	59	8	0.23
Tannin	50948	•	•	7	15	78	7	0.27
Shore	50949		•	8	31	61	7	0.23
Twilight	50950							
Mahogany	50951		•	8	11	81	7	0.28
Maple	50952							
Mother of Pearl	50953							
Flower bud	50954							
Glacier	50955		•	9	47	44	8	0.18
Rope	50957	•	•	9	34	57	8	0.21
Mocha	50958	•	•	7	15	78	7	0.28
Raffia	50959	•	•	9	39	52	8	0.20
Biscuit	50960	•	•	8	26	66	7	0.24
Pacific	50961							
Citrine	50962							
Tornado	50963		•	6	10	84	6	0.28
Reed	50964							
Jasmine	50982	•	•	17	74	9	15	0.10

TS : Solar Transmission (%)

RS : Solar Reflection (%)

AS : Solar Absorption (%)

TS + RS + AS = 100% of incident energy

TV n-h : Normal-hemispherical visible light transmission (%)

g_{int} : Internal solar factor



PERFORMANCES

SOLTIS TOUCH 3% (7653)

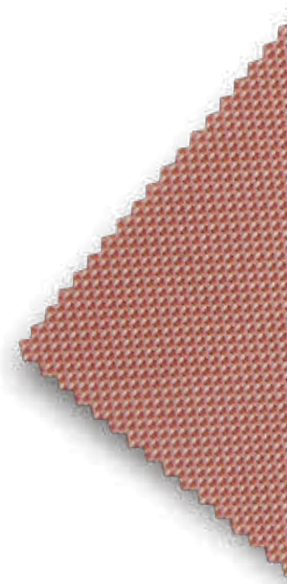
Roll widths			TS	RS	AS	TVn-h	g _{tot} ISO 52022-3* Glazing D**
127 mm 5 in.	180 cm 70.9 in	270 cm 106.3 in					
•	•	•	8	55	37	7	0.15
•	•	•	4	28	68	4	0.23
•	•	•	4	14	82	4	0.27
•	•	•	4	9	87	4	0.28
•	•	•	7	48	45	4	0.18
•	•	•	5	31	64	4	0.23
•	•	•	3	23	74	3	0.24
•	•	•	4	11	85	4	0.28
•	•	•	6	46	48	5	0.18
•	•	•	7	45	48	6	0.18
		•	6	33	61	5	0.22
•	•	•	5	15	80	5	0.27
•	•	•	5	32	63	4	0.23
		•	4	11	85	4	0.28
•	•	•	4	11	85	3	0.28
•	•	•	5	25	70	4	0.24
		•	7	52	41	6	0.16
		•	7	44	49	6	0.18
		•	6	47	47	5	0.18
•	•	•	6	35	59	5	0.21
•	•	•	4	12	84	4	0.28
•	•	•	6	40	54	6	0.20
•	•	•	5	26	69	4	0.24
		•	5	26	69	4	0.24
		•	5	32	63	4	0.23
•	•	•	4	11	85	4	0.28
		•	5	30	65	5	0.23
•	•	•	14	75	11	12	0.10

*Detailed method
ISO 52022-3

SOLTIS TOUCH 1% (7651)

Roll widths		TS	RS	AS	TVn-h	g _{tot} ISO 52022-3* Glazing D**
180 cm 70.9 in	270 cm 106.3 in					
•	•	6	57	37	4	0.15
•	•	2	8	90	2	0.26
•	•	4	47	49	3	0.18
•	•	2	16	82	2	0.27
•	•	4	42	54	3	0.19
•	•	11	76	13	9	0.09

The transmission and reflection values above are based on the spectral values of the glass combined with the screen. These are used to calculate the the g_{tot} value.
**Type "D" glazing is solar control double glazing with a low-e coating in position 2 (4 mm + 16 mm space + 4 mm float ; Argon-filled) g = 0.32 – U = 1.1.



Soltis Touch

Soltis Touch 5%
(7655*)

Soltis Touch 3%
(7653 & BV7653)

Soltis Touch 1%
(7651*)

■ Technical properties

	Soltis Touch 5% (7655*)	Soltis Touch 3% (7653 & BV7653)	Soltis Touch 1% (7651*)	Standards
Openness factor	5%	3%	1%	
Weight	430 g/m ² • 12.7 oz/sq.yd	455 g/m ² • 13.9 oz/sq.yd	450 g/m ² • 13.3 oz/sq.yd	EN ISO 2286-2
Thickness	0.73 mm • 730 microns	0.75mm • 750 microns	0.65 mm • 650 microns	
Width	180 cm - 270 cm 70.9 in. – 106.3 in.	180 cm - 270 cm - 127 mm 70.9 in. – 106.3 in. – 5 in.	180 cm – 270 cm 70.9 in. – 106.3 in.	

■ Roll length

Standard width format in 127 cm width	-	45 lm • 49.21 yd	-	
Standard width format in 180 cm width	45 lm • 49.21 yd	45 lm • 49.21 yd	45 lm • 49.21 yd	
Standard width format in 270 cm width	30 lm • 32.81 yd	30 lm • 32.81 yd	30 lm • 32.81 yd	

■ Physical properties

Tensile strength (warp/weft)	150/100 daN/5 cm	150/120 daN/5 cm	150/100 daN/5 cm	EN ISO 1421
Tear strength (warp/weft)	15/15 daN	15/15 daN	15/15 daN	DIN 53.363
Acoustic absorption		$\alpha_w=0.40$ (LA=100 mm)	$\alpha_w=0.45$ (LA=100 mm)	EN ISO 354








■ Reaction to fire

Rating	M1 /NFP 92-507 — M1 /UNE 23.727-90 — B1 /DIN 4102-1 — 1530.2/ AS /NZS — 1530.3/ AS /NZS Class A /ASTM E84 — Class 1 /EN 13773 — Class 1 /UNI 9177-87 — VKF 5.3 SN 198898 — BS 7837 BS 5867 — Method 1 and 2 /NFPA 701 — Schwerbrennbar-Q1-Tr1 /ONORM A3800-1 CAN ULC S109 — CSFMT19			
Euroclass	B-s2,d0	B-s2,d0	B-s2,d0	EN 13501-1

■ Management system

Quality		ISO 9001
Environmental		ISO 14001
Energy		ISO 50001

■ Certifications, labels, warranty

Smart Yarn Technology							
-----------------------	---	---	---	---	---	--	---

■ Tools and services

ACV and FDES available on request
Tool for evaluating the energy savings that can be achieved with Soltis solar protection: SOLTISSIM. Contact your Serge Ferrari representative.

¹ Logo "+=0": summarises the Serge Ferrari Group's commitment to CSR, to align economic performance and positive impact. Find out about our concrete actions in our CSR report.

* 1% and 5% are also available on request in small rolls in the BV variant.

The technical characteristics quoted are average values subject to a +/- 10% tolerance.

Purchasers of our products are responsible for their application or their transformation with regard to possible third party rights. Purchasers of our products are also responsible for their implementation and installation in accordance with the standards, codes of practice and safety regulations of the destination country. Consult our warranty document for information regarding the contractual guarantee. The characteristic values provided in this document reflect test results obtained in accordance with design practices. They are quoted for information only to offer our customers an optimum product usage. Our products are subject to changes reflecting technical progress and we reserve the right to modify their characteristics at any time. The purchaser of our products is responsible for checking to verify the validity of the above-quoted values.