

A new vision  
of outdoors



# Soltis

## Veozip

### Applications

ZIP blinds (façade and pergola), external blinds, vertical veranda blinds



- Optimised for facade external blinds using ZIP systems
- Blocks 95 to 97% of the heat ( $0.03 \leq g_{\text{tot}}^e \leq 0.05$  with D glazing) (\*)
- Blocks at least 93% of the heat ( $g_{\text{tot}}^e \leq 0.07$ ) regardless of the glazing or color (\*\*)
- Euroclass B-s2, d0
- Certification High UV colour fastness

(\*) calculation based on ISO 52022-3

(\*\*) calculation based on ISO 52022-3 for Type D glazing



Blocks up to 96%  
of UV rays



# Enjoy the shade and keep your view.

**Soltis Veozip is the ideal fabric for enjoying your outdoor view due to its unmatched transparency.** Its matt, woven aspect will embody your terrace's warm, elegant design.

As an effective extension of your living space, your pergola equipped with **Soltis Veozip** creates a real cocoon outside. You'll fully enjoy your fun times sheltered from the wind and heat, while remaining within your outdoor environment.



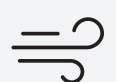
Hemp-base  
composition for  
natural fabric  
aspect



Blocks up to 96%  
of UV radiation



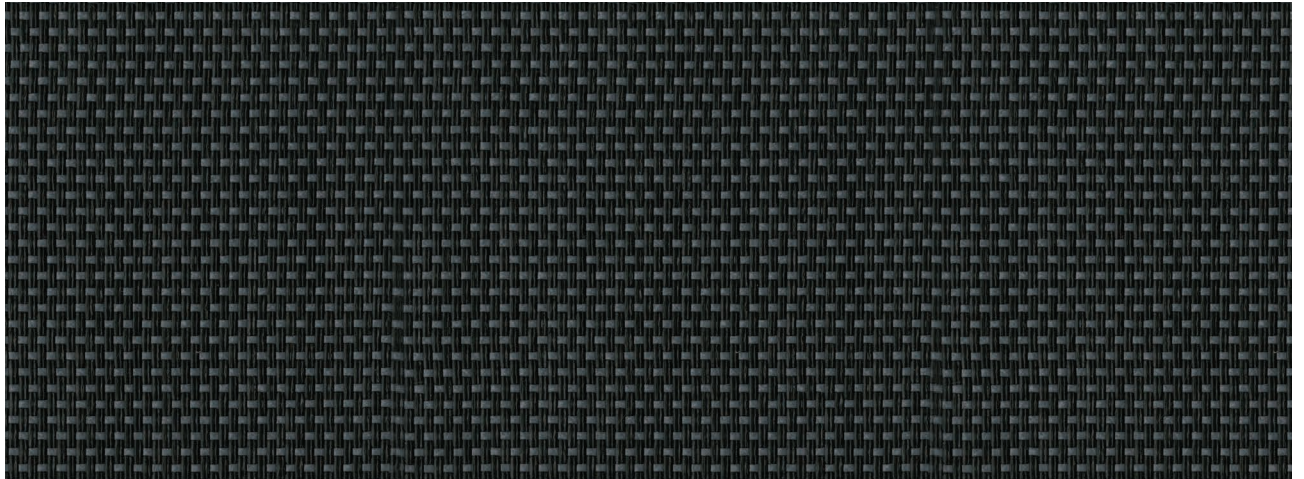
Plays on  
transparency



Protects  
from wind

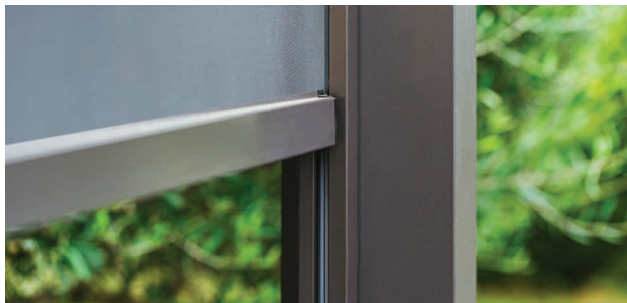
# Soltis

Veozip



Shadow

7605-51194



Perfect integration into ZIP systems.



Optimum thermal comfort to take maximum advantage of your terrace without excessive heat in mid-summer.

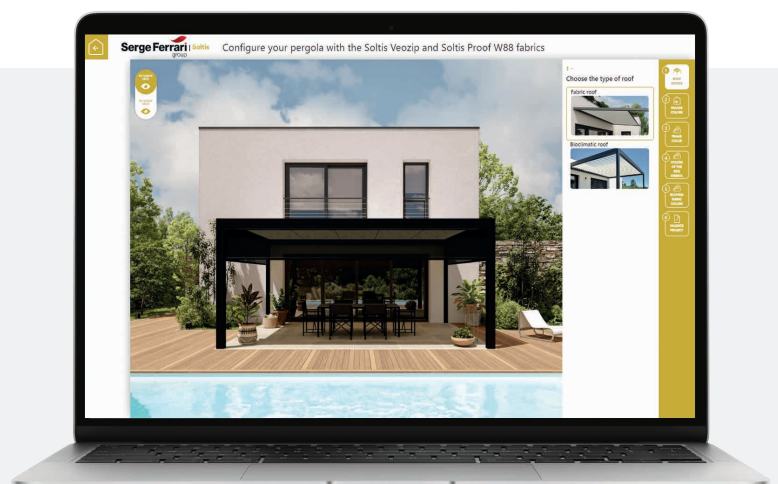


Glare control for greater visual comfort during relaxing or remote working times.

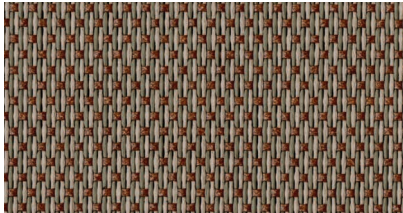
**Personalise the pergola  
of your dreams!**



**Scan this  
QR code**  
to configure  
your pergola

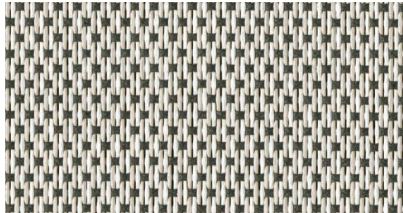


# RAW



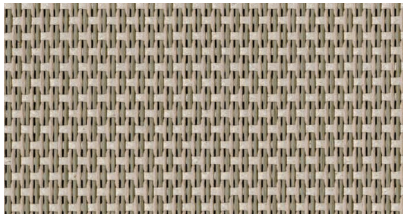
**Macadamia**

7605-51188



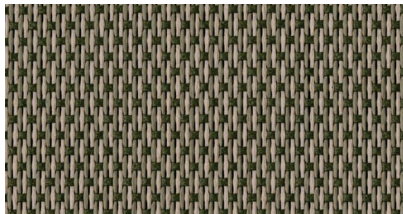
**Edelweiss**

7605-51185



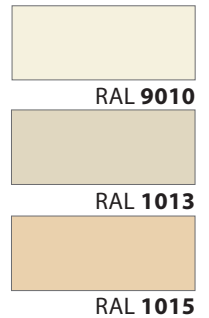
**Natural**

7605-51187

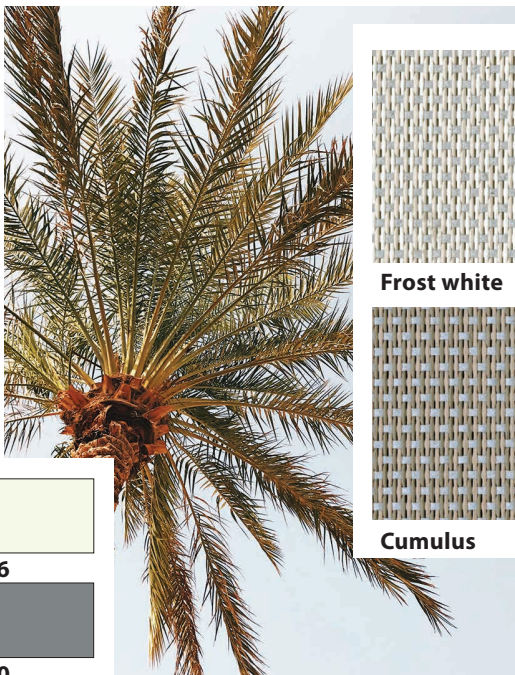


**Tundra**

7605-51190

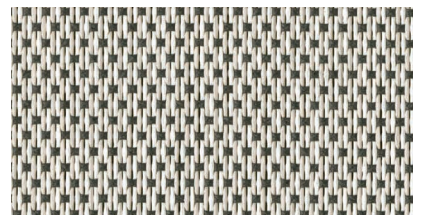


# TROPICAL



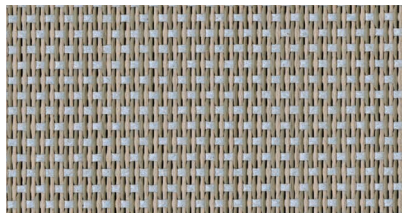
**Frost white**

7605-51184



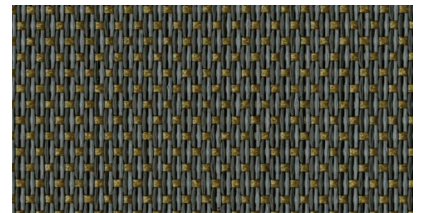
**Edelweiss**

7605-51185



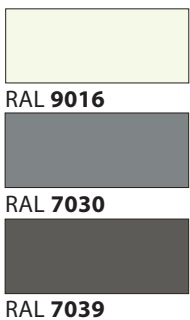
**Cumulus**

7605-51186



**Lunar surface**

7605-51191





# ELEGANT



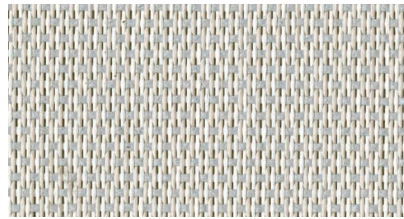
RAL 9010



RAL 7016

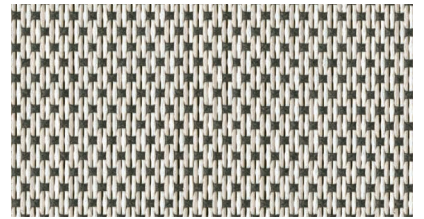


RAL 9005



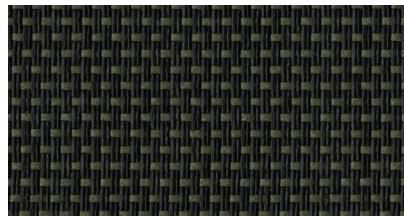
Frost white

7605-51184



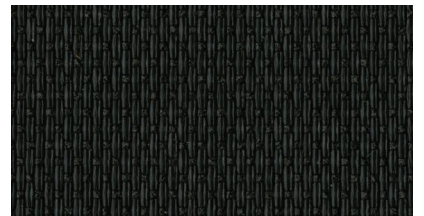
Edelweiss

7605-51185



Volcano

7605-51195



Graphite black

7605-51198

# SPICE



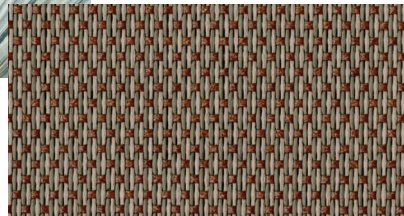
RAL 1019



RAL 8019

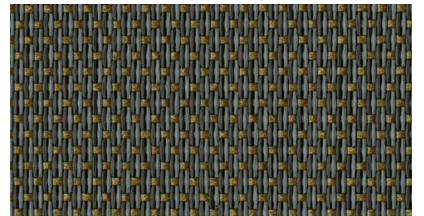


RAL 3004



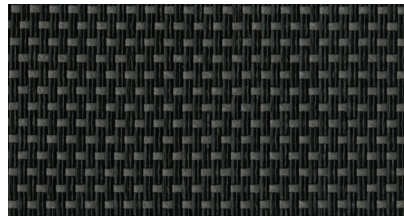
Macadamia

7605-51188



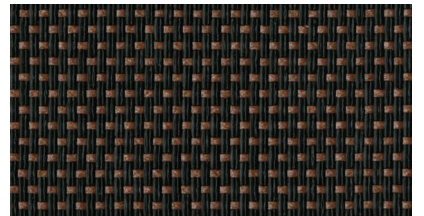
Lunar surface

7605-51191



Grey pepper

7605-51197



Sandalwood

7605-51196



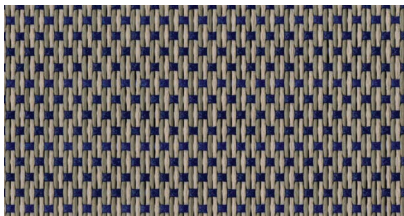
RAL 7035



RAL 9007

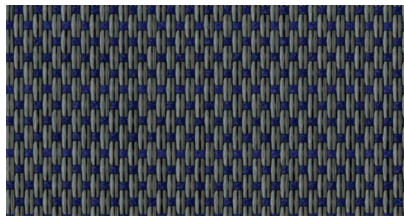


RAL 7016



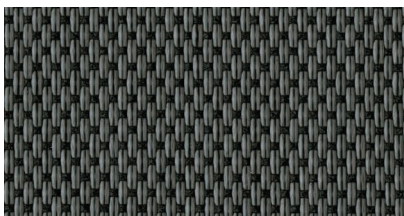
Mistral

7605-51189



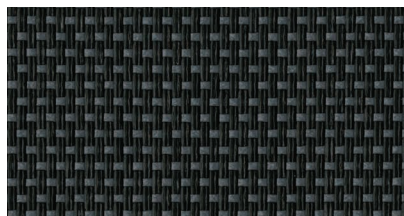
Sea urchin

7605-51193



Sea lion

7605-51192

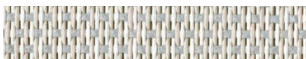










Shadow

7605-51194

# PURE

## ■ Solar and light properties

		TS	RS	AS	TV n-h	$g_{\text{tot}}^e$ ISO 52022-3** Type D glazing	
Frost white	<b>51184</b>		9	59	32	8	0.04
Edelweiss	<b>51185</b>		9	50	41	8	0.04
Cumulus	<b>51186</b>		6	37	57	6	0.04
Natural	<b>51187</b>		7	37	56	7	0.04
Macadamia	<b>51188</b>		5	29	66	4	0.03
Mistral	<b>51189</b>		5	28	67	5	0.03
Tundra	<b>51190</b>		6	27	67	5	0.04
Lunar surface	<b>51191</b>		7	18	75	6	0.04
Sea lion	<b>51192</b>		8	13	79	7	0.05
Sea urchin	<b>51193</b>		6	17	77	6	0.04
Shadow	<b>51194</b>		5	7	88	5	0.04
Volcano	<b>51195</b>		5	7	88	5	0.04
Sandalwood	<b>51196</b>		6	10	84	6	0.04
Grey pepper	<b>51197</b>		5	8	87	5	0.04
Graphite black	<b>51198</b>		5	5	90	5	0.04

**TS** : Solar Transmission (%)

**RS** : Solar Reflection (%)

**AS** : Solar Absorption (%)

**TS + RS + AS** = 100 % of incident energy

**TV n-h** : Normal-hemispherical visible light transmission (%)

**$g_{\text{tot}}^e$**  : Outdoor solar factor

\*\* ISO 52022-3  
detailed method

Consider the spectral transmission and reflection values for the glazing + blind combination to calculate the solar factor  $g_{\text{tot}}^e$ .  
Glazing type "D": Low emission, insulating double glazing - face 2  
(4 + 16 + 4; argon-filled)  $g = 0.32$  -  $U = 1.1$

# Soltis

## Veozip

	■ Technical properties	■ Standards
Openness factor	5 %	
Weight	600 g/m <sup>2</sup> • 17.7 oz/sq.yd	EN ISO 2286-2
Thickness	0.90 mm • 900 microns	
Widths	250 cm* - 290 cm - 320 cm • 98.4 in.* - 114.2 in. - 126 in.	


	■ Roll length
Standard format: 250 cm roll width	42 lm • 45.93 yd
Standard format: 290 cm roll width	42 lm • 45.93 yd
Standard format: 320 cm roll width	35 lm • 38.28 yd

	■ Physical properties
Tensile resistance (warp/weft)	250/170 daN/5 cm EN ISO 1421
Tear resistance (warp/weft)	25/25 daN DIN 53.363


	■ Reaction to fire
Rating	<b>M1</b> /NFP 92-507 — <b>B1</b> /DIN 4102-1 — BS 7837 — BS 5867 — <b>Class 1</b> /UNI 9177-87 — <b>Class 1</b> /EN 13773 <b>Method 1</b> /NFPA 701 — CSFMT19 — <b>Class A</b> /ASTM E84 — CAN ULC S109 — 1530.2/ <b>AS</b> /NZS 1530.3/ <b>AS</b> /NZS
Euroclass	<b>B-s2,d0</b> EN 13501-1


	■ Management system
Quality	ISO 9001
Environment	ISO 14001
Energy	ISO 50001


### ■ Certifications, labels, warranties





Smart Yarn  
Technology












5-year  
warranty



### ■ Tools and services

Tool for evaluating the energy savings that can be achieved with Soltis solar protection: SOLTISSIM. Contact your Serge Ferrari representative.

<sup>1</sup> “+ = 0” logo: summarises the Serge Ferrari Group’s commitment to CSR, to align economic performance and positive impact. Find out about our concrete actions in our CSR report.

The technical data above are averaged values with a +/- 5% tolerance.

The buyer of our products is fully responsible for their application or their transformation concerning any possible third party. The buyer of our products is responsible for their implementation and installation according to the standards, use and customs and safety rules of the countries where they are used. For information on our contractual warranty, please refer to the relevant terms and conditions.

The values quoted above represent results of tests performed in compliance with common design practices and are provided for only to enable customers to make the best use of our products. Our products are subjects to evolutions due to technical progress, we remain entitled to modify the characteristics of our products at any time. The buyer of our products is responsible for checking the validity of the above data.

\* Available during 2023