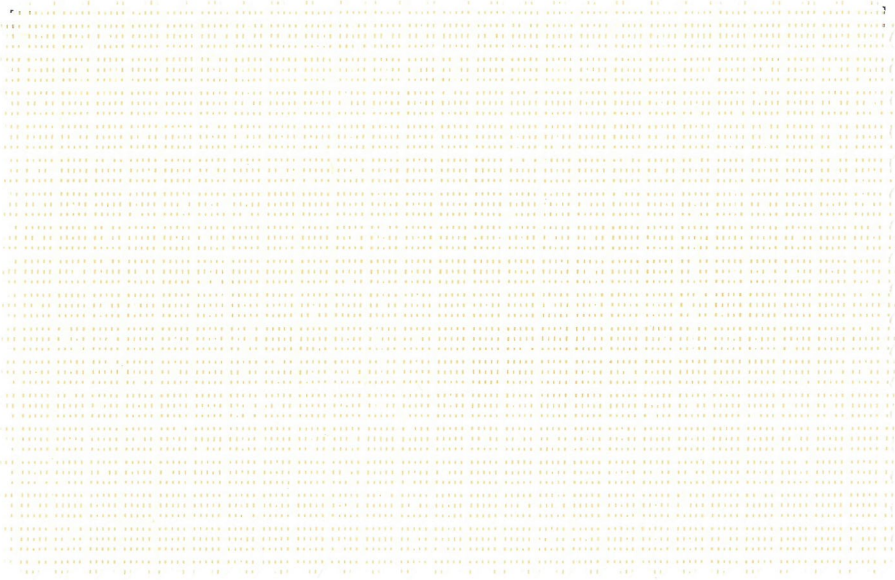


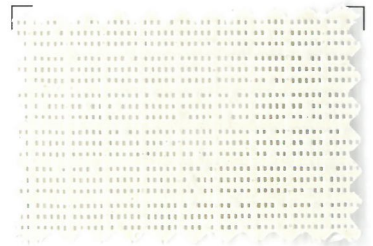
COLORE RAL su richiesta on demand  
COLOR RAL on demand



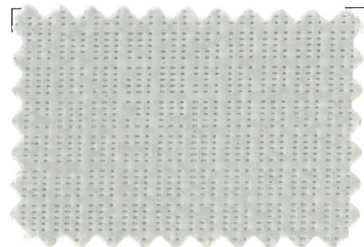
683 -



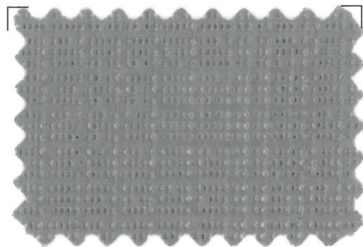
410 9016



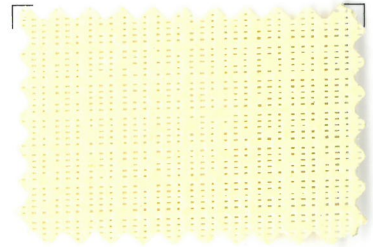
428 9002



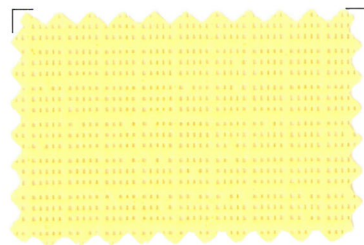
415 7038



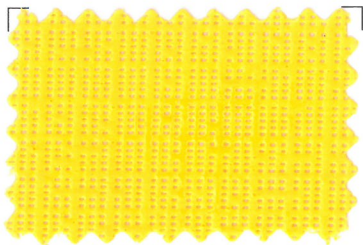
417 7037



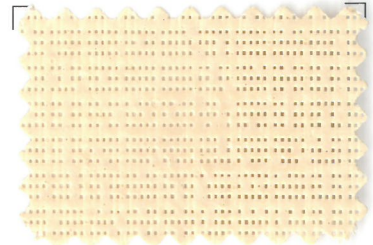
414 -



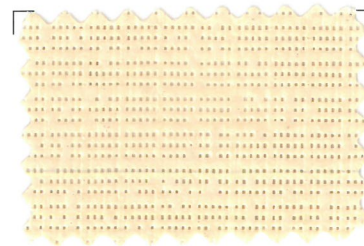
441 -



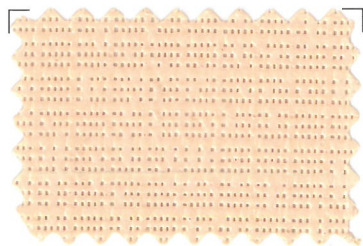
476 - su richiesta on demand



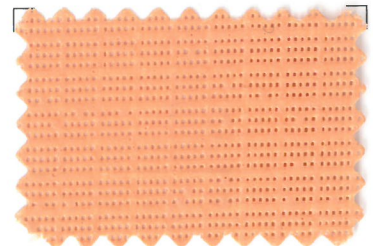
474 -



475 -

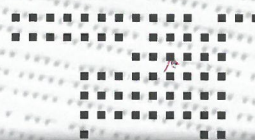


442 - su richiesta on demand

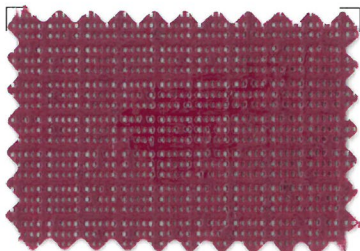


478 - su richiesta on demand

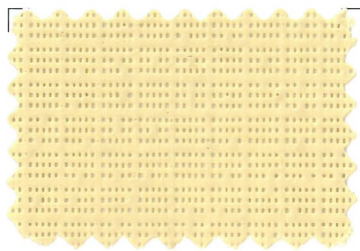




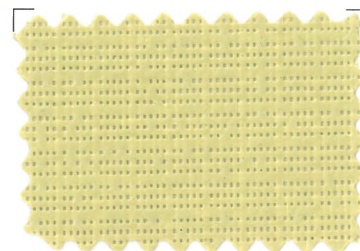
## SOLEIL SUNCONTROL



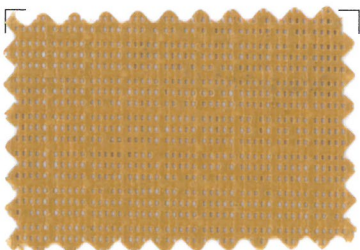
452 4004 su richiesta on demand



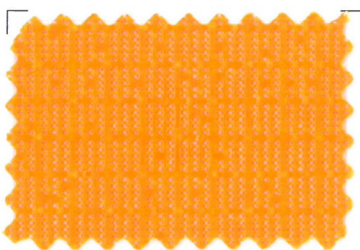
419 -



453 - su richiesta on demand



440 1011 su richiesta on demand



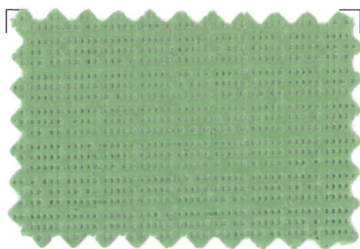
472 2000 su richiesta on demand



436 2002 su richiesta on demand



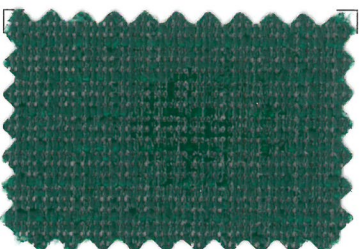
439 8004 su richiesta on demand



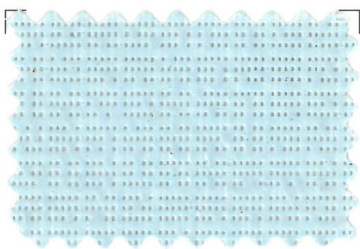
437 6021 su richiesta on demand



288 - su richiesta on demand



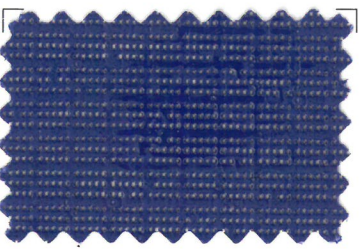
454 6005 su richiesta on demand



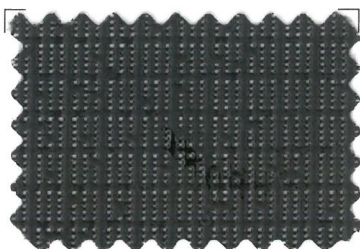
489 - su richiesta on demand



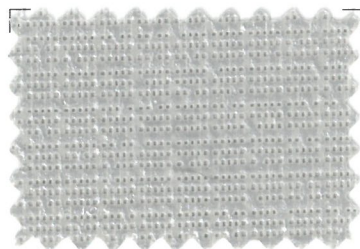
490 5007 su richiesta on demand



491 5022 su richiesta on demand






427 9005



084 - su richiesta on demand






NAIZIL colore colour	RAL	H 165	H 250	$\tau_{e, n-h}$	$\tau_{v, n-h}$	$\rho_{e, n-h}$	$\alpha_{e, n-h}$	$\tau_{uv, n-h}$			
valori medi % / average values %											
288	/	•	•	13,8 %	12,5 %	14,2 %	72,0 %	11,8 %	3	4	2
410	9016	•	•	34,9 %	33,7 %	55,6 %	9,5 %	14,1 %	2	2	2
414	/	•	•	25,7 %	23,8 %	58,6 %	15,7 %	8,8 %	3	3	2
415	7038	•	•	16,1 %	15,1 %	31,1 %	52,8 %	13,1 %	4	4	2
417	7037	•	•	12,1 %	11,5 %	16,1 %	71,8 %	11,1 %	3	4	2
419	1014	•	•	20,5 %	17,8 %	43,3 %	36,2 %	12,0 %	3	3	2
427	9005	•	•	12,9 %	12,6 %	3,9 %	83,2 %	12,4 %	3	4	2
428	9002	•	•	22,3 %	19,9 %	52,7 %	25,0 %	10,8 %	2	3	2
436	2002	•	•	26,6 %	14,7 %	36,2 %	37,2 %	12,0 %	4	3	2
437	6021	•	•	24,0 %	16,2 %	35,9 %	40,1 %	13,5 %	4	3	2
439	8004	•	•	27,1 %	13,8 %	30,9 %	42,0 %	12,6 %	4	3	2
440	1011	•	•	16,9 %	13,1 %	23,4 %	59,7 %	10,3 %	3	3	2
441	/	•	•	27,0 %	25,2 %	49,9 %	23,1 %	10,7 %	1	3	2
442	/	•	•	23,2 %	18,3 %	48,8 %	28,0 %	10,5 %	3	3	2
452	4004	•	•	24,7 %	9,6 %	27,7 %	47,6 %	9,5 %	2	3	2
453	1000	•	•	26,1 %	22,6 %	41,1 %	32,8 %	13,5 %	3	3	2
454	6005	•	•	15,1 %	13,1 %	8,3 %	76,6 %	12,4 %	4	3	2
472	2000	•	•	25,8 %	16,0 %	40,9 %	33,3 %	12,1 %	3	3	2
474	/	•	•	23,4 %	20,5 %	47,3 %	29,3 %	12,8 %	3	3	2
475	/	•	•	28,9 %	25,2 %	45,4 %	25,7 %	16,4 %	3	3	2
476	/	•	•	27,1 %	22,0 %	46,1 %	26,8 %	11,2 %	3	3	2
478	/	•	•	29,9 %	22,5 %	40,5 %	29,6 %	12,9 %	2	3	2
489	/	•	•	26,3 %	20,0 %	49,3 %	24,4 %	13,3 %	3	3	2
490	5007	•	•	21,9 %	12,5 %	28,2 %	49,9 %	12,5 %	4	3	2
491	5022	•	•	25,2 %	12,9 %	21,4 %	53,4 %	12,9 %	4	3	2
683	/	•	•	28,7 %	26,7 %	57,4 %	13,9 %	13,6 %	3	3	2
084	/	•	•	12,5 %	11,6 %	33,6 %	53,9 %	10,1 %	3	3	2

	NORME/ STANDARDS	SOLEIL SUNCONTROL	
Tessuto di supporto: Type of base fabric:	EN-ISO2076	Poliestere Alta Tenacità High Tenacity Polyester	
Titolo del filo: Yarn size:	EN-ISO7211	dtex	550/1100
Peso totale: Total weight:	EN-ISO2286-2	g/m <sup>2</sup>	350
Spessore finale: Fabric thickness:	EN-ISO2286-3	mm	0,45
Resistenza alla trazione. Ordito: Tensile strength. Warp:	EN-ISO1421	N/5cm	2000
Resistenza alla trazione. Trama: Tensile strength. Weft:	EN-ISO1421	N/5cm	3000
Resistenza alla lacerazione. Ordito: Tear strength. Warp:	DIN53363	N	300
Resistenza alla lacerazione. Trama: Tear strength. Weft:	DIN53363	N	550
Resistenza al freddo: Cold resistance:	Prove interne Internal test	°C	-30
Resistenza al caldo: Heat resistance:	Prove interne Internal test	°C	+70
Resistenza alla fiamma: Flame retardancy:	*	*	Si/Yes*
Adesione: Adhesion:	EN-ISO2411	N/2cm	20

\* Tutte le caratteristiche menzionate sono valori medi con tolleranza del +/-5%.  
The technical data indicated are average values with allowance +/- 5%.

\* Contattateci per i certificati di reazione al fuoco.  
Please, contact us for flame retardancy certificates.

Fattore di trasmissione solare Solar transmission factor	$\tau_{e, n-h}$	Fattore di trasmissione UV UV-rays transmission factor	$\tau_{uv, n-h}$
Fattore di trasmissione luminosa Light transmission factor	$\tau_{v, n-h}$	Comfort visivo: contatto visivo con l'esterno Visual comfort: outer visual contact	
Fattore di riflessione solare Solar reflection factor	$\rho_{e, n-h}$	Comfort termico (vetrata D): esterno Thermic comfort (glass door D): outside	
Fattore di assorbimento solare Solar absorption factor	$\alpha_{e, n-h}$	Comfort termico (vetrata D): interno Thermic comfort (glass door D): inside	

INFLUENZA SUL COMFORT TERMICO INFLUENCE ON THERMIC COMFORT		CLASSE CLASS
Effetto molto piccolo	Very little effect	0
Effetto piccolo	Little effect	1
Effetto moderato	Moderate effect	2
Effetto buono	Good effect	3
Effetto molto buono	Excellent effect	4

**naizil**® S.r.l.  
TESSUTI SPALMATI

SEDE LEGALE AMM. E  
STAB. SPALMATI PLASTICI:  
35011 Campodarsego (PD) ITALY  
Via Pontarola, 17  
Tel. +39 - 049 9203600

[www.naizil.com](http://www.naizil.com)

info@naizil.com  
export@naizil.com  
naizilsrl@legalmail.com